

OSHTEMO CHARTER TOWNSHIP BOARD
7275 West Main Street
Kalamazoo, MI 49009

October 22, 2024

Refer to page 3 for Virtual Meeting Information

REGULAR MEETING
5:30 P.M.
AGENDA

1. Call to Order
2. Remote Location Identification (for remote attendance when permitted by statute)
3. Pledge of Allegiance
4. Township Mission/Vision/Core Values
Core Value: Public Service – Difficult questions are not marginalized.
5. Public Officials Updates
6. Work Session
 - Presentation: Oshtemo Fire Department Strategic Plan
7. Public Comment on Non-Regular Session Items
8. Consent Agenda
 - a. Meeting Minutes [[Minutes of Budget Meeting October 8, 2024](#)]
 - b. October 2024 Peer Certificates of Recognition
9. Consideration 2025 Employee Benefit Package
10. Discussion of 2025 Kalamazoo County Sheriff's Office and Oshtemo Police Protection Agreement
11. Resolution Authorizing Consumers Energy Contract Change for Lighting Service
12. Public Comment
13. Board Member Comments & Committee Updates
14. Adjournment

Policy for Public Comment Township Board Regular Meetings, Planning Commission & ZBA Meetings

All public comment shall be received during one of the following portions of the Agenda of an open meeting:

- a. Citizen Comment on Non-Agenda Items or Public Comment – while this is not intended to be a forum for dialogue and/or debate, if a citizen inquiry can be answered succinctly and briefly, it will be addressed or it may be delegated to the appropriate Township Official or staff member to respond at a later date. More complicated questions can be answered during Township business hours through web contact, phone calls, email (oshtemo@oshtemo.org), walk-in visits, or by appointment.
- b. After an agenda item is presented by staff and/or an applicant, public comment will be invited. At the close of public comment there will be Board discussion prior to call for a motion. While comments that include questions are important, depending on the nature of the question, whether it can be answered without further research, and the relevance to the agenda item at hand, the questions may not be discussed during the Board deliberation which follows.

Anyone wishing to make a comment will be asked to come to the podium to facilitate the audio/visual capabilities of the meeting room. Speakers will be invited to provide their name, but it is not required.

All public comment offered during public hearings shall be directed, and relevant, to the item of business on which the public hearing is being conducted. Comment during the Public Comment Non-Agenda Items may be directed to any issue.

All public comment shall be limited to four (4) minutes in duration unless special permission has been granted in advance by the Supervisor or Chairperson of the meeting.

Public comment shall not be repetitive, slanderous, abusive, threatening, boisterous, or contrary to the orderly conduct of business. The Supervisor or Chairperson of the meeting shall terminate any public comment which does not follow these guidelines.

(adopted 5/9/2000)
(revised 5/14/2013)
(revised 1/8/2018)

Questions and concerns are welcome outside of public meetings during Township Office hours through phone calls, stopping in at the front desk, by email, and by appointment. The customer service counter is open from Monday-Thursday, 8 a.m.-1 p.m. and 2-5 p.m., and on Friday, 8 a.m.-1 p.m. Additionally, questions and concerns are accepted at all hours through the website contact form found at www.oshtemo.org, email, postal service, and voicemail. Staff and elected official contact information is provided below. If you do not have a specific person to contact, please direct your inquiry to oshtemo@oshtemo.org and it will be directed to the appropriate person.

Oshtemo Township Board of Trustees

Supervisor

Cheri Bell 216-5220 cbell@oshtemo.org

Clerk

Dusty Farmer 216-5224 dfarmer@oshtemo.org

Treasurer

Clare Buszka 216-5260 cbuszka@oshtemo.org

Trustees

Neil Sikora 760-6769 nsikora@oshtemo.org

Kristin Cole 375-4260 kcole@oshtemo.org

Zak Ford 271-5513 zford@oshtemo.org

Michael Chapman 375-4260 mchapman@oshtemo.org

Township Department Information

Assessor:

Kristine Biddle 216-5225 assessor@oshtemo.org

Fire Chief:

Greg McComb 375-0487 gmccomb@oshtemo.org

Ordinance Enforcement:

Alan Miller 216-5230 amiller@oshtemo.org

Parks Director:

Vanessa Street 216-5233 vstreet@oshtemo.org

Rental Info 216-5224 oshtemo@oshtemo.org

Planning Director:

Jodi Stefforia 375-4260 jstefforia@oshtemo.org

Public Works Director:

Anna Horner 216-5228 ahorner@oshtemo.org

Zoom Instructions for Participants

Before a videoconference:

1. You will need a computer, tablet, or smartphone with a speaker or headphones. You will have the opportunity to check your audio immediately upon joining a meeting.
2. If you are going to make a public comment, please use a microphone or headphones with a microphone to cut down on feedback, if possible.
3. Details, phone numbers, and links to videoconference or conference call are provided below. The details include a link to “**Join via computer**” as well as phone numbers for a conference call option. It will also include the 11-digit Meeting ID.

To join the videoconference:

1. At the start time of the meeting, click on this link to [join via computer](#). You may be instructed to download the Zoom application.
2. You have an opportunity to test your audio at this point by clicking on “Test Computer Audio.” Once you are satisfied that your audio works, click on “Join audio by computer.”

You may also join a meeting without the link by going to [join.zoom.us](#) on any browser and entering this **Meeting ID: 818 2435 4562**

If you are having trouble hearing the meeting or do not have the ability to join using a computer, tablet, or smartphone then you can join via conference call by following instructions below.

To join the conference by phone:

1. On your phone, dial the teleconferencing number: **1-929-205-6099**
2. When prompted using your touchtone (DTMF) keypad, enter the Meeting ID number: **818 2435 4562#**

Participant controls in the lower-left corner of the Zoom screen:



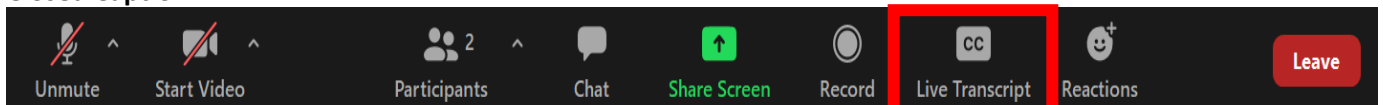
Using the icons at the bottom of the Zoom screen, you can (some features will be locked to participants during the meeting):

- Participants – opens a pop-out screen that includes a “Raise Hand” icon that you may use to raise a virtual hand. **This will be used to indicate that you want to make a public comment.**
- Chat – opens pop-up screen that allows participants to post comments during the meeting.

If you are attending the meeting by phone, to use the “Raise Hand” feature **press *9 on your touchtone keypad.**

Public comments will be handled by the “Raise Hand” method as instructed above within Participant Controls.

Closed Caption:



Turn on Closed Caption:

Using the icons at the bottom of the Zoom screen:

1. Click on the “Live Transcription” button.
2. Then select “Show Subtitle”.

Mission:

To advance the quality of life of all residents through a commitment to responsible growth, and value-driven municipal services that promote the relationships among economic vitality, environmental stewardship, and social equity.

Vision:

A sustainable and innovative community built through a legacy of planned, responsible growth and rural preservation.

Core Values:

PUBLIC SERVICE

- Fair treatment to all people.
- Each customer is welcomed and that their input is wanted.
 - Difficult questions are not marginalized.
- Allow residents to interact directly with the township staff and officials.
- Decisions are made based on the value to our Township and residents.

SUSTAINABILITY

- Meet the needs of the present without compromising future generations.
 - Consider the environment through practices that reduce impacts.
 - Value conscious decision making.
 - Committing to quality Fire and Police protection.

INNOVATION

- Providing the best value-conscious technology currently available.
- Leverage new technologies and ways of doing business to increase accessibility and improve services.

PROFESSIONALISM

- Hire staff with strong core competencies within their given profession.
- Commitment to continuous improvement to government operations.
- Dedicated to open communication to improve productivity and effectiveness.

INTEGRITY

- Decisions are made logically through the collection of evidence, facts, and public input.
 - When promises are made, we follow through.
 - We do not obfuscate – we say what we mean and do what we say.
 - Transparent governmental practices are of the highest priority.

FISCAL STEWARDSHIP

- Ensure that taxpayer investments are spent wisely, effectively and efficiently.

FY25 – FY27
STRATEGIC PLAN

MISSION

VISION

VALUES

To honorably serve our residents, visitors, and fellow firefighters by delivering services with respect, responsibility, and pride.

Empowering a professional fire department dedicated to excellence in safety and rescue, driven by our core values of respect, responsibility, and pride in serving our growing community.

Respect, Responsibility, Pride, Integrity, Honor



Owner: Deputy Chief Burghardt
Backup: Chief McComb

RESPONSE



Owner: Captain Della Pia
Backup: Deputy Chief Burghardt

TRAINING



Owner: Assistant Chief Wiley
Backup: Captain Fuller

COMMUNITY RISK REDUCTION



Owner: Chief McComb
Backup: Deputy Chief Burghardt

ADMINISTRATION



Owner: Chief McComb
Backup: Deputy Chief Burghardt

MAINTENANCE

DESIRED
OUTCOME

Achieve 90th percentile performance outcomes by delivering rapid, efficient emergency responses, utilizing data-driven metrics, and continuously improving through training and innovation.

Achieve professional excellence through up-to-date, relevant, and engaging training, ensuring our team is skilled, knowledgeable, and ready to meet all challenges.

Reduce community risk through proactive fire prevention, comprehensive public education, and thorough fire investigations, ensuring a safer and more resilient community.

Conduct comprehensive, efficient administrative operations to ensure accountability, transparency, and effective resource management.

Ensure routine, in-depth maintenance of equipment, apparatus, and fire stations to enhance operational readiness, safety, and resource longevity.

FY25
STRATEGIES

Streamline emergency response protocols to optimize resource allocation and reduce response times through data-driven decision-making.

Implement annual skills assessment to identify gaps and tailor training to meet professional standards

Improved compliance for 1st, 2nd and 3rd parties. Have published risk assessment for Oshtemo

Establish clear performance metrics to evaluate administrative operations and ensure alignment with the department's mission and goals.

Implement a digital maintenance management system to schedule, track, and log all apparatus, equipment, and facility inspections and repairs.

FY26
STRATEGIES

Strengthen firefighter training programs focusing on rapid response techniques and continuous skill enhancement for improved efficiency.

Adopt new training technologies, such as virtual simulations, to enhance real-world scenario readiness

Implement risk mitigation strategies, improve compliance, and publish the finalized Community Risk Assessment (CRA).

Develop an annual review process that involves internal and external stakeholders to assess administrative efficiency and service delivery.

Develop and integrate a formal apparatus replacement schedule that aligns with federal standards and department goals for reliability.

FY27
STRATEGIES

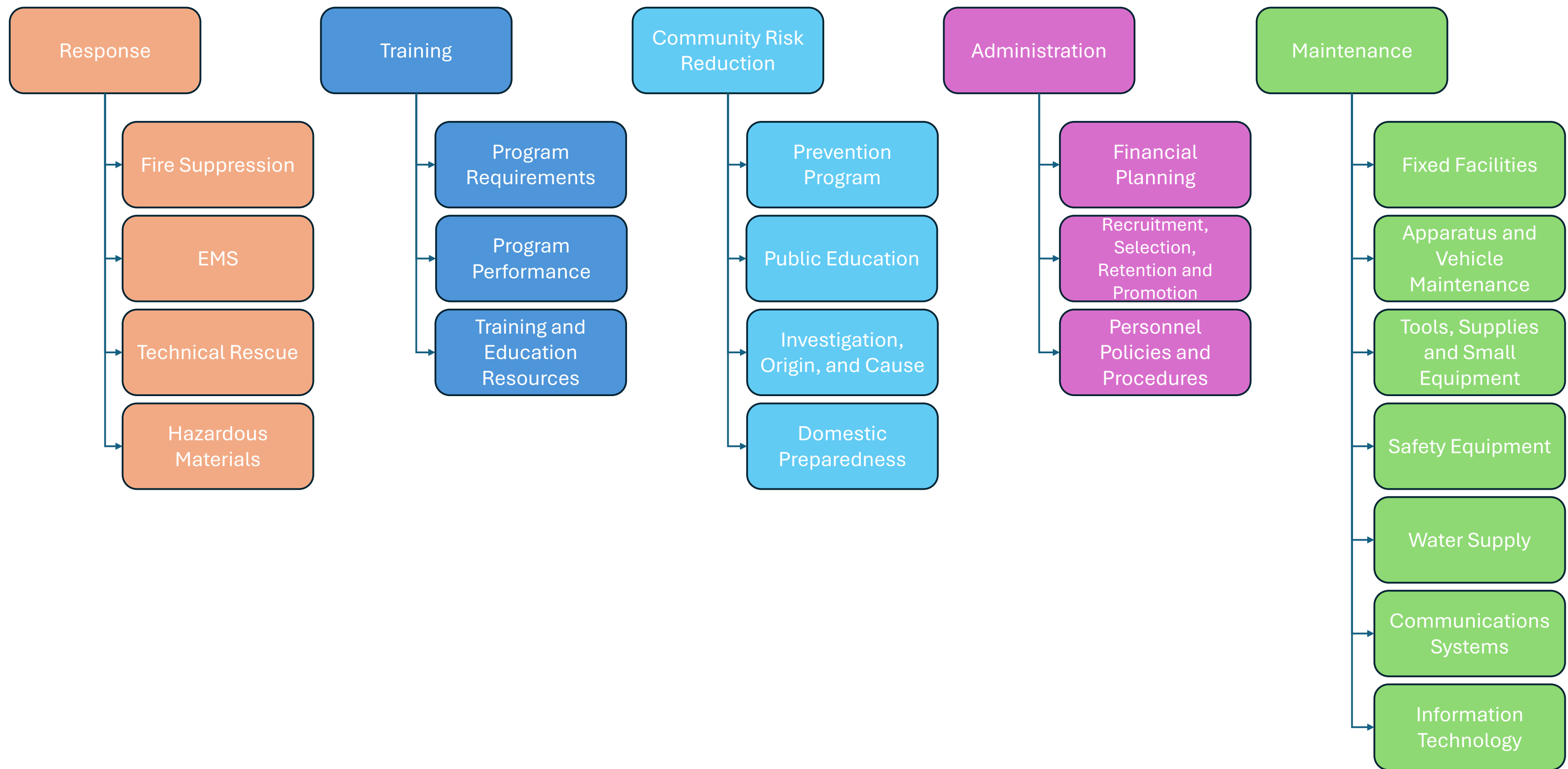
Implement continuous improvement practices to refine emergency procedures and consistently achieve 90th-percentile performance outcomes.

Establish peer-led mentoring programs to promote knowledge sharing and enhance team-wide expertise

Ensure continuous monitoring and program improvement to reduce high-risk incidents through refined CRA processes.

Establish a financial audit framework to monitor resource utilization and ensure compliance with local, state, and federal regulations.

Conduct annual safety and compliance audits of facilities and apparatus to identify and address potential maintenance gaps.



Presented To: Chief Greg McComb
Nominated By: Ann H

Today, I would like to acknowledge Chief Greg McComb. Although I do not have daily interaction with Chief McComb, from conversations and from observation, Greg is a thoughtful, strong, supportive, and fair-minded leader. His commitment to his vocation, to the public, and to his staff are very evident and his efforts to ensure his team members are valued and treated fairly, is commendable. I appreciate his integrity, professionalism, calm demeanor, and good sense of humor!

Presented To: Anna H
Nominated By: James P

Shout out to Anna for being an exceptionally good expert witness!

Presented To: Sierra L
Nominated By: James P

Big thank you to Sierra for her outstanding organization and handling of exhibits in court!

Presented To: Deputy Chief Eric Burghardt, Assistant Chief Jim Wiley, Captain Scott Fuller, Erin P
Nominated By: Ann H

I want to share my appreciation for the very professional, capable, and devoted Deputy Chief, Assistant Chief/Fire Marshal, Captain of Community Risk Reduction, and Administrative Assistant, for their efficient operations and work in responding to crises. It is also very comforting to know the very skillful and dedicated team of Oshtemo firefighters are right next door!

Memorandum

Date: 22 October 2024
To: Township Board
From: Sara Feister, Human Resources Director
Subject: 2025 Employee Benefit Package



Objective

To summarize the 2025 Employee Benefit offerings for Board consideration.

Proposed Motion:

I move to approve the 2025 Employee Benefit Package.

Background

The Township provides a comprehensive benefit package to employees. The Township works closely with Nulty as our agent for most of the benefits provided. Annually, typically in October, the renewal of benefit plans is discussed with Nulty. Subjects discussed include suggested vendor changes, rate impacts, regulatory compliance, and evaluation of offerings.

Summary of 2025 Employee Benefit Package

- ❖ Medical Insurance (Blue Cross Blue Shield of Michigan)
 - High Deductible Health Plan (HDHP)
 - 13.88% increase to premiums
 - Deductible increasing from \$3,200/\$6,400 to \$3,300/\$6,600
 - Out of Pocket Limit increasing from \$3,200/\$6,400 to \$3,300/\$6,600
 - Traditional Health Plan
 - 13.52% increase to premiums
 - Office Visit Co-Pay decreasing from \$40.00 to \$30.00
 - In Lieu of Medical Insurance Credit
 - \$45.00 per pay period per employee
 - No structure changes
 - Medicare Reimbursement
 - Township reimburses 80% of Medicare cost for employees & spouses over the age of 65
- ❖ Health Savings Account for employees enrolled in the HDHP (Kushner)
 - Requesting Board approval to fund employee's HSA \$1,650/\$3,300 (50% of the deductible amount, which is proportional to 2024 funding)
- ❖ Health Reimbursement Arrangement for employees enrolled in the Traditional Health Plan (Kushner)
 - No structure changes
 - HRA will reimburse \$1,500/\$3,000 of the deductible (same as past years)
- ❖ Dental Insurance (Delta Dental)
 - 8.00% increase to premiums
 - No structure changes
- ❖ Vision Insurance (Delta Vision/VSP Network)
 - 7.00% increase to premiums
 - No structure changes
- ❖ Short- & Long-Term Disability Insurance (NIS/Kansas City Life)
 - No increase
 - No structure changes
- ❖ Employer Sponsored Life/AD&D Insurance (Colonial Life)
 - No increase
 - No structure changes

- ❖ Long Term Care Insurance (UNUM)
 - No increase
 - No structure changes
- ❖ Dependent Care Flexible Spending Account (Kushner) *New Benefit*
 - Requesting funding of up to \$5,000 per eligible employee on a reimbursement basis through Kushner
- ❖ Worker's Compensation (Accident Fund)
 - Increase amount is unknown and pending annual claim audit (2024 increase was \$17,124)
 - No structure changes
- ❖ Firefighter Supplemental Insurance (VFIS)
 - Unknown amount of increase, if any (there was no increase in 2024)
 - No structure changes
- ❖ Retiree Health Care Savings Plan (MERS)
 - \$3,600 annual employer contribution
 - No structure changes
- ❖ 401(a)/457(b) Retirement Plan (Greenleaf Trust)
 - Requesting an increase from 4.00% employer contribution & 4.00% employer match to 5.00% employer contribution & 5.00% employer match
- ❖ Employee Assistance Program (currently Kansas City Life, moving to Pine Rest in 2025)
 - Currently a free program under our STD/LTD carrier
 - 2025 annual cost is approximately \$2,125 (\$27.00 per employee plus a \$100 annual fee)
 - More information on program available by request

Employee Paid Benefits

- ❖ Medical Flexible Spending & Limited Purpose Flexible Spending Accounts
 - No structure changes
- ❖ Supplemental Insurance (currently AFLAC, moving to Colonial Life in 2025)
 - Able to offer increased benefits with little to no impact on premium rates
- ❖ Additional Life/AD&D Insurance (Colonial Life)
 - No increase except for age related increases

Insurance Quoting Information

The census that employers complete annually is what the insurance carriers use to produce quotes. The employer includes only benefit eligible employees on the census. The eligibility (minimum of 32 hours) is determined by the employer based on policies and/or Summary Plan Description. At Oshtemo Township, Paid On call Firefighters, Seasonal employees, & Part Time employees under 32 hours per week are exempt from health insurance benefits; therefore, these employees are not included on the census. When our census was completed this year, we had 53 eligible employees. Insurance companies use a 'look back' method when quoting, and employers generally need to sustain over 50 employees for at least 1 year to be considered a large group. This means that for medical, the carriers quoted us as a small group – under 50 employees – based on the last 12 months.

Information Provided

1. 2024/2025 Benefit Package Cost Comparison

Core Values

Sustainability, Integrity, Fiscal Stewardship. Professionalism

2024/2025 Benefit Package Cost Comparison

Description	2024 Carrier	2025 Carrier	2024 Actual Cost	2025 Quoted/Projected Cost	Percent Increase
Medical Insurance (<i>employer pays 80%</i>)	BCBSM	BCBSM	\$368,632.18	\$419,798.33	13.88%
Medical Opt Out	N/A	N/A	\$11,700.00	\$12,000.00	2.56%
Medicare Reimbursement	N/A	N/A	\$2,080.32	\$2,500.00	20.17%
Health Savings Account (HSA) Funding	Kushner	Kushner	\$65,600.00	\$70,000.00	6.71%
Health Reimbursement Arrangement (HRA) Funding	Kushner	Kushner	\$20,000.00	\$20,000.00	0.00%
Dental & Vision Insurance (<i>employer pays 80%</i>)	Delta Dental	Delta Dental	\$32,999.12	\$35,639.05	8.00%
Short & Long Term Disability	Kansas City Life	Kansas City Life	\$17,837.78	\$17,837.78	0.00%
Life Insurance/AD&D	Colonial Life	Colonial Life	\$5,200.42	\$5,200.42	0.00%
Long Term Care	UNUM	UNUM	\$6,544.74	\$6,544.74	0.00%
Dependent Care Flexible Spending Account (DCFSA) Funding	Kushner	Kushner	\$0.00	\$100,000.00	100.00%
Worker's Compensation	Accident Fund	Accident Fund	\$58,998.00	\$70,000.00	18.65%
Firefighter Supplemental Insurance	VFIS	VFIS	\$20,002.00	\$20,002.00	0.00%
Retiree Health Care Savings Plan	MERS	MERS	\$201,600.00	\$208,800.00	3.57%
401a/457b Retirement Account	Greenleaf Trust	Greenleaf Trust	8.00% of regular earnings	10.00% of regular earnings	2.00%
HRA, FSA, & HSA Administration Fees	Kushner	Kushner	\$3,425.33	\$3,425.33	0.00%
Employee Assistance Program	Kansas City Life	Pine Rest	\$0.00	\$2,125.00	100.00%

*contingent on actual 2025 enrollments

*estimate based on previous year

POLICE PROTECTION AGREEMENT

This Agreement is made this ____ day of _____, 2024, by and between the County of Kalamazoo, hereinafter designated "County"; the Sheriff of Kalamazoo County, Michigan, hereinafter designated "Sheriff"; and the Township of Oshtemo, Kalamazoo County, Michigan, hereinafter designated "Township."

WITNESSETH:

WHEREAS, Act 246 of the Public Acts of 1945, as amended [MCL 41.181], authorizes a township, by resolution, to appropriate funds and call upon the sheriff of the county to provide special police protection for the township, including enforcement of local township ordinances; and

WHEREAS, Act 33 of the Public Acts of 1951, as amended [MCL 41.801], further authorizes a township to appropriate funds for police protection, motor vehicles, and equipment and, in general, to establish a police department for police protection within the township; and

WHEREAS, Act 35 of the Public Acts of 1951 (MCL 124.1) authorizes municipal corporations to join in the performance of any service which each could perform separately and

WHEREAS, The Township accordingly desires to enter into an agreement with the Sheriff and the County for additional police protection within the Township.

NOW, THEREFORE, in consideration of the promises, covenants, and conditions hereinafter contained, IT IS HEREBY AGREED by and between the parties hereto as follows:

1. The Township, under the authority of the aforementioned Public Acts, hereby calls upon the Sheriff to furnish additional special police protection within the Township for the enforcement of state and local laws and ordinances of the Township, subject to the terms and conditions hereinafter contained. Within the limitations of available personnel, the Sheriff hereby covenants and agrees to furnish such additional police protection under such terms and conditions.
2. For the time period of January 1, 2025, through December 31, 2025, the County and the Sheriff agree to provide the equivalent of eight **(8) full-time Uniform Services Section Deputies** with appropriate experience to service the Township with additional special police protection and provide the necessary hours for overtime in relation to the routine duties of those officers.

Coverage & Shifts: Please see Addendum B

The County and the Sheriff agree to provide the equivalent of two **(2) full-time Sergeants** with appropriate experience to supervise the Deputies. One Sergeant is responsible for the day shift and one Sergeant for the evening shift.

Coverage & Shifts: Please see Addendum B

The County and Sheriff agree to provide the equivalent of one **(1) full-time traffic enforcement Deputy** who will ordinarily issue citations under the Township's Uniform Traffic Code. The full-time Traffic Deputy will operate throughout the entire Township. Traffic enforcement will take place as directed by the Sergeant with input from the Township Supervisor. The traffic enforcement Deputy will serve as the primary Deputy to handle traffic accidents thereby relieving Uniform Services Section Deputies to respond as needed.

Coverage & Shifts: Please see Addendum B

The County and the Sheriff agree to provide two **(2) full-time Community Policing Deputies and one (1) Detective Sergeant.**

Community Policing Officers (CPOs) will focus on proactive engagement, crime prevention, and strengthening the relationship between law enforcement and residents. Their primary role will be separate from general call-taking officers and traffic enforcement, allowing them to concentrate on building community trust, addressing localized issues, and maintaining a visible presence in high-density residential areas and business districts. Focusing on these primary responsibilities will still lead to generating calls for service and preliminary and follow-up investigations.

CPO Primary Responsibilities:

Community Engagement: Building relationships with residents, business owners, and community leaders.

Event Coordination: Organizing and participating in township events, neighborhood watch meetings, and safety presentations.

Problem-solving: Addressing recurring issues such as trespassing, vandalism, panhandling, homelessness, or other concerns raised by residents.

CPO Reporting:

Oshtemo Township and KCSO have agreed to work collaboratively to develop a plan for what kind of reporting the Township may desire from the CPO's in 2025.

Detective Sergeant Primary Responsibilities:

Investigation Oversight: Lead investigations related to crimes within Oshtemo Township, ensuring timely follow-up and resolution.

Community Rapport: Build and maintain relationships with local business owners, housing managers, and residents to foster cooperation during investigations.

Data-Driven Policing: Develop heat maps, identify crime trends, and propose prevention strategies in coordination with patrol units and township leaders.

Traffic and Safety Concerns: Evaluate and recommend solutions for traffic-related issues within the township, particularly in areas of high-density traffic.

Collaboration: Coordinate with other law enforcement agencies for cross-jurisdictional crime investigations and information sharing.

Board Reporting: Present crime data, trends, and prevention strategies to the Township Board as requested.

Coverage & Shifts: Please see Addendum B

Reporting: The Sheriff's Office will provide the township with monthly reports on Calls for Service data. These reports will include, but are not limited to, specific trends in Uniform Crime Reporting (UCR) crimes and traffic-related incidents, which are pre-approved by the Sheriff. The following special reports will be provided by the Oshtemo Det./Sgt. monthly or as requested by the township board.

- A. CFS Heat maps
 - All CFS
 - Specific incident-type heat map
 - Month-to-month comparison heat map
 - Traffic accident heat maps.
- B. Oshtemo Township Deputies
 - Venue of reports taken (in/out of the Twp.)
 - Explanation of out-of-area activity.
- C. Traffic Car Activity
 - Citation Report
- D. Township Alarms Report
- E. Criminal Case Submissions
 - Approval / Denied stats.
 - Felony / Misdemeanor submissions with approved/denied.
- F. Behavioral Health Closures / pick up orders. (data only, no names)

3. These Deputies (s), Sergeant (s), and Detective Sergeant will work principally within the boundaries of the Township. They will not be employed by the Sheriff outside of said boundaries except in case of general public emergencies, riots, civil disturbances, or general inter-municipal cooperation in a search and apprehension in a general inter-municipal cooperative law enforcement effort. The Kalamazoo County Consolidated Dispatch Authority will be made aware of the stipulations of this paragraph.
4. If the Township intends to extend this Agreement further, it shall notify the Sheriff in writing **on or before September 1, 2025**, and submit a request describing the police services desired. As soon as practical after receiving the Township's request, the Sheriff shall provide the Township with a written statement of the costs for such services. The Parties will work in good faith to enter into a new Agreement for the subsequent year or years.
5. The normal Sheriff's police protection will be continued within the Township and will not be reduced as a result of this Agreement or as a result of additional police service provided hereunder. Patrol deputies assigned to the Township under this Agreement will enforce Township ordinances as well as State law and County ordinances. The deputies will not be utilized by the Township for functions or duties other than those related to law enforcement or police protection.
6. All Sworn Staff will be deputy sheriffs and directly accountable to the Sheriff.
7. The County will provide insurance for the motor vehicle(s) used in the performance of the services described in this Agreement, as well as the liability and workers' compensation insurance coverage for any personnel assigned to duty in the Township. "Insurance", insofar as vehicles and personnel are concerned, means the coverage provided by the County as of the effective date of this Agreement. If such coverage is discontinued for any reason, the County will notify the Township immediately.
8. In carrying out the terms of this Agreement, the parties will adhere to all applicable Federal, State and local laws, regulations and policies prohibiting discrimination. The parties, as required by law and/or policies of either the County or the Township will not discriminate against persons to receive services under this Agreement or against an employee or applicant for employment with respect to hire, tenure, terms, conditions or privileges of employment, or a matter directly or indirectly related to employment, because of race, color, religion, national origin, age, sex, sexual orientation, gender identity, disability that is unrelated to the individual's ability to perform the duties of a particular job or position, height, weight, marital status or political affiliation or beliefs. Breach of this covenant will be regarded as a material breach of this Agreement.
9. It is expressly understood and agreed by the parties hereto that the requirements of this Agreement will not be construed as in any way affecting the collective bargaining

agreement covering the personnel assigned to the Township under this Agreement including, but not limited to, the adding of provisions thereto or subtracting provisions therefrom.

10. No failure or delay on the part of any of the parties to this Agreement in exercising any right, power or privilege hereunder will operate as a waiver thereof nor will a single or partial exercise of any right, power or privilege preclude any other or further exercise of any other right, power, or privilege.
11. Modifications, amendments, or waivers of any provision of this Agreement may be made only by the written mutual consent of the parties hereto.
12. This Agreement is not intended to be a third-party beneficiary contract and confers no rights on anyone other than the parties hereto.
13. This Agreement contains all the terms and conditions agreed upon by the parties hereto, and no other agreements, oral or otherwise, regarding the subject matter of this Agreement or any part thereof will have any validity or bind any of the parties hereto and any prior agreements will be null and void.
14. If any clause or provision of this Agreement is rendered invalid or unenforceable because of any State or Federal statute or regulation or ruling by any tribunal of competent jurisdiction, that clause or provision will be null and void, and any such invalidity or unenforceability will not affect the validity or enforceability of the remainder of this Agreement. It will be considered to be deleted and the remainder of this Agreement will not be affected thereby. Where the deletion of the invalid provision would result in the illegality and/or unenforceability of this Agreement, this Agreement will be considered to have terminated as of the date in which the provision was rendered invalid or unenforceable.
15. This Agreement will be subject to and construed in accordance with the laws of the State of Michigan. In the event any disputes arise under this Agreement, it is understood and agreed that any legal or equitable action resulting from such disputes will be in Michigan Courts whose jurisdiction and venue will be established in accordance with the statutes and Court Rules of the State of Michigan. In the event any action is brought in or is moved to a federal court the venue for such action will be the Federal Judicial District of Michigan, Western District, Southern Division.
16. This Agreement will continue until one of the parties hereto delivers a written notice to all other parties of this Agreement of their intent to **terminate this Agreement; 90 days after delivery of such written notice**, this Agreement will end and be null and void thereafter.
17. The people signing on behalf of the parties hereto certify by their signatures that they are duly authorized to sign this Agreement on behalf of said parties and that this Agreement has been authorized by said parties.

IN WITNESS WHEREOF, the authorized representatives of the parties hereto have executed this Agreement the day and date first above written.

COUNTY OF KALAMAZOO

TOWNSHIP OF OSHTEMO

Tami Rey, Chairperson
Kalamazoo County Board of Commissioners

Cheri Bell
Township Supervisor

Meredith Place
County Clerk/Register

Richard C. Fuller III, Sheriff

Addendum A

Township Contracting Rate Schedule 2025

Base costs per officer equipment and indirect costs:

This is based on the number of deputies and vehicles assigned to Oshtemo Township in 2024. These costs may increase should it be determined by the Township and the Sheriff's Office that additional vehicles and or equipment are needed in 2025.

Will be billed quarterly instead of monthly.

	Quarterly Rate
Officer Equipment	\$449.35
Additional direct costs (fuel, training, maintenance.)	\$1,153.63
Equipped car*	0
Clerical costs	0
Supervisory costs	0
Indirect costs (ins, departmental, admin.)	0
Total Base Costs (\$1,602.98 x 8 vehicles) = \$12,823.84 per quarter	\$1,602.98

*If an additional car is required, the Township will be required to pay a one-time charge of **\$16,720**.

Should it be determined, another vehicle is needed for the two CPO's and an additional vehicle for the Det./Sgt. Position: the township will be required to pay a one-time charge of \$16,720.00 towards the costs of providing each additional vehicle assigned to Oshtemo. It is understood the Sheriff's Office will ensure the total costs of any new vehicles needing to be added to its main fleet. All vehicles assigned to Oshtemo Township will come from the KCSO main fleet and will not be assigned to other townships during the duration of the Oshtemo contract. Oshtemo Township and KCSO will remain open to discussing any increase in vehicle and equipment costs due to inflation. No changes to the above costs shall occur due to inflation unless both parties discuss and agree to the change.

One-time charge for two additional vehicles = $\$16,720.00 \times 2$ (1 for CPO's, 1 for Detective) = **\$33,440.00**.

Below is the new quarterly charge after the two additional vehicles are added to the Oshtemo fleet.

Estimated Quarterly cost with 2 additional vehicles	Quarterly Rate
Officer Equipment	\$449.35
Additional direct costs (fuel, training, maintenance.)	\$1,153.63
Equipped car*	0
Clerical costs	0
Supervisory costs	0
Indirect costs (ins, departmental, admin.)	0
Total Base Costs (\$1,602.98 x 10 vehicles) = \$16,029.80 per quarter	\$1,602.98

Rate Schedule Per Position – Per Collective Bargaining Agreement effective 1/1/2025
(Pending Bargaining)

The total hourly rate to be billed will be adjusted as salaries are determined with each collective bargaining agreement. The Sergeant rates are the same as the Detective Sergeant.

2025 TOWNSHIP CONTRACTING RATE	1/1/2025 - 4% INCREASE					
(ESTIMATE)						
	HOURLY	OVERTIME	ALLOCATION	TOTAL	TOTAL	
DEPUTY POSITION	BASE PAY	(10%)	(54%)	HOURLY RATE	COST	
D19 - A STEP	27.22	2.72	16.17	46.11	95,898.94	
D19 - B STEP	28.76	2.88	17.08	48.71	101,322.34	
D19 - C STEP	30.30	3.03	18.00	51.32	106,745.74	
D19 - D STEP	31.84	3.18	18.92	53.95	112,205.79	
D19 - E STEP	33.36	3.34	19.82	56.52	117,555.90	
D19 - F STEP	34.92	3.49	20.74	59.16	123,052.59	
D19 - G STEP	36.46	3.65	21.66	61.77	128,476.00	
D19 - H STEP	40.51	4.05	24.06	68.62	142,730.75	
	HOURLY	OVERTIME	ALLOCATION	TOTAL	TOTAL	
SERGEANT POSITION	BASE PAY	(10%)	(54%)	HOURLY RATE	COST	
E22 - A STEP	31.39	3.14	18.64	53.17	110,593.43	
E22 - B STEP	33.21	3.32	19.73	56.25	117,006.23	
E22 - C STEP	35.04	3.50	20.81	59.35	123,455.68	
E22 - D STEP	36.85	3.68	21.89	62.42	129,831.85	
E22 - E STEP	38.68	3.87	22.97	65.52	136,281.30	
E22 - F STEP	40.48	4.05	24.04	68.57	142,620.81	
E22 - G STEP	42.32	4.23	25.14	71.69	149,106.91	
E22 - H STEP	47.02	4.70	27.93	79.65	165,670.27	

Addendum B

Oshtemo Township General Deputy Coverage & Shifts (8):

Shift Structure: 12-hour rotating shifts, providing coverage seven days a week, 24 hours a day.

- Platoon A = 2 Deputies 7a – 7p
- Platoon B = 2 Deputies 7p – 7a
- Platoon C = 2 Deputies 7a – 7p (Opposite days as Platoon A)
- Platoon D = 2 Deputies 7p – 7a (Opposite nights as Platoon B)
-

Oshtemo Township Traffic Unit Coverage & Shifts (1):

Shift Structure: 10-hour shifts working either Monday-Thursday or Tuesday through Friday.

- Hours are typically 7a – 5p.
- Hours may be adjusted to address specific traffic concerns of the agency or Twp.

Oshtemo Township Supervisory Sergeants Coverage & Shifts (2):

Shift Structure: 10-hour, rotating shift. (2-2-3-4-3)

- Day shift 7a-5p
- Afternoon shift 4p- 2a
- Supervision of Oshtemo Deputies is covered by general county Sergeants in the absence of Oshtemo Twp. Sergeants.

Oshtemo Township CPO Coverage & Shifts (2):

Shift Structure: 12-hour rotating shifts, providing coverage seven days a week from 8 a.m. to 8 p.m. This ensures coverage during weekends, when community events are more likely to occur, and during early morning and evening hours.

- Week 1 A.) M, T, F, S
 B.) Su, W, Th
 - Week 2 A.) Su, W, Th
 B.) M, T, F, S
- **Recommended Coverage:** One officer primarily focused on high-density housing and the other on business districts, with flexibility to adjust based on seasonal or event-based demands.

Oshtemo Township Detective Sergeant Coverage & Shifts (1):

Shift Structure:8-hour shifts M – F

- Hours are typically 8a-4p.
 - May be adjusted for operational needs of the agency or Twp.
- Calls within Oshtemo Township: this detective will be first on-call after hours.
- If unavailable, Detectives from the General County pool will be contacted.

Flexibility Clause:

Oshtemo Township and KCSO will remain open to schedule discussions throughout the one-year contract based on the needs of the Township and the staffing ability of KCSO. No schedule modifications or changes will occur unless both parties discuss and agree to the changes.

Example Schedule for Oshtemo Township Contract Positions

OCTOBER 2024																																		
Slot		Officer		T	W	Th	F	Sa	Su	M	T	W	Th	F	Sa	Su	M	Tu	W	Th	F	Sa	Su	M	Tu	W	Th	F	Sa	Su	M	Tu	W	Th
				1	2	3	4	5	6	7	8	9	10	11	12	13	14	15	16	17	18	19	20	21	22	23	24	25	26	27	28	29	30	31
D a y S h i f t	Detective			8A-4P	8A-4P	8A-4P	8A-4P	X	X	8A-4P	8A-4P	8A-4P	8A-4P	8A-4P	X	X	8A-4P	8A-4P	8A-4P	8A-4P	8A-4P	X	X	8A-4P	8A-4P	8A-4P	8A-4P	8A-4P	X	X	8A-4P	8A-4P	8A-4P	8A-4P
	OSH SGT			X	7A-5P	7A-5P	X	X	X	7A-5P	7A-5P	7A-5P	X	X	7A-5P	7A-5P	7A-5P	7A-5P	7A-5P	X	X	X	X	7A-5P	7A-5P	7A-5P	X	X	7A-5P	7A-5P	7A-5P	7A-5P	X	X
	OSH 1			7A-7P	X	X	7A-7P	7A-7P	7A-7P	X	X	7A-7P	7A-7P	X	X	X	7A-7P	7A-7P	X	X	7A-7P	7A-7P	7A-7P	X	X	7A-7P	7A-7P	X	X	X	7A-7P	7A-7P	X	X
	OSH 2			7A-7P	X	X	7A-7P	7A-7P	7A-7P	X	X	7A-7P	7A-7P	X	X	X	7A-7P	7A-7P	X	X	7A-7P	7A-7P	7A-7P	X	X	7A-7P	7A-7P	X	X	X	7A-7P	7A-7P	X	X
	OSH3			X	7A-7P	7A-7P	X	X	X	7A-7P	7A-7P	X	X	7A-7P	7A-7P	7A-7P	X	X	7A-7P	7A-7P	X	X	X	7A-7P	7A-7P	X	X	7A-7P	7A-7P	7A-7P	X	X	7A-7P	7A-7P
	OSH4			X	7A-7P	7A-7P	X	X	X	7A-7P	7A-7P	X	X	7A-7P	7A-7P	7A-7P	X	X	7A-7P	7A-7P	X	X	X	7A-7P	7A-7P	X	X	7A-7P	7A-7P	7A-7P	X	X	7A-7P	7A-7P
	CPO A			7A-7P	X	X	7A-7P	7A-7P	7A-7P	X	X	7A-7P	7A-7P	X	X	X	7A-7P	7A-7P	X	X	7A-7P	7A-7P	X	X	7A-7P	7A-7P	X	X	X	7A-7P	7A-7P	X	X	
	CPO B			X	7A-7P	7A-7P	X	X	X	7A-7P	7A-7P	X	X	7A-7P	7A-7P	7A-7P	X	X	7A-7P	7A-7P	X	X	X	7A-7P	7A-7P	X	X	7A-7P	7A-7P	7A-7P	X	X	7A-7P	7A-7P
	OSH Traffic			7A-5P	7A-5P	7A-5P	7A-5P	X	X	X	7A-5P	7A-5P	7A-5P	7A-5P	X	X	X	7A-5P	7A-5P	7A-5P	7A-5P	X	X	X	7A-5P	7A-5P	7A-5P	7A-5P	X	X	X	7A-5P	7A-5P	7A-5P
E v e n i n g	OSH SGT			X	4P-2A	4P-2A	4P-2A	4P-2A	4P-2A	X	X	4P-2A	4P-2A	4P-2A	X	X	X	X	4P-2A	4P-2A	4P-2A	4P-2A	4P-2A	X	X	4P-2A	4P-2A	4P-2A	X	X	X	X	4P-2A	4P-2A
	OSH 1			7P-7A	X	X	7P-7A	7P-7A	7P-7A	X	X	7P-7A	7P-7A	X	X	X	7P-7A	7P-7A	X	X	7P-7A	7P-7A	7P-7A	X	X	7P-7A	7P-7A	X	X	X	7P-7A	7P-7A	X	X
	OSH 2			7P-7A	X	X	7P-7A	7P-7A	7P-7A	X	X	7P-7A	7P-7A	X	X	X	7P-7A	7P-7A	X	X	7P-7A	7P-7A	7P-7A	X	X	7P-7A	7P-7A	X	X	X	7P-7A	7P-7A	X	X
	OSH 3			X	7P-7A	7P-7A	X	X	X	7P-7A	7P-7A	X	X	7P-7A	7P-7A	7P-7A	X	X	7P-7A	7P-7A	X	X	X	7P-7A	7P-7A	X	X	7P-7A	7P-7A	7P-7A	X	X	7P-7A	7P-7A
	OSH 4			X	7P-7A	7P-7A	X	X	X	7P-7A	7P-7A	X	X	7P-7A	7P-7A	7P-7A	X	X	7P-7A	7P-7A	X	X	X	7P-7A	7P-7A	X	X	7P-7A	7P-7A	7P-7A	X	X	7P-7A	7P-7A

Memorandum



Date: October 22, 2024
To: Township Board
From: Zach Pearson, Public Works Project Manager
Subject: Skyridge Ave, Driftwood Ave, Green Meadow Rd, Mandalay Dr, Crimson Ln, Westview St Streetlights

Objective

Update the Board on streetlight conversions and authorize changes to the standard lighting contract with Consumers Energy.

Proposed Motion

I move to adopt the resolution to authorize Consumers Energy Company to make changes in the lighting service as provided in the standard light contract dated February 1, 2013 & October 2, 2018.

Background

Public Works staff has been working with Consumers Energy to identify neighborhoods for streetlight conversions and upgrades in coordination with other infrastructure projects. The goal of the project is to convert existing high pressure sodium lights (HPS) to more efficient light emitting diode (LED) lights and to install additional lights to achieve the recommended photometric spacing if warranted.

The Skyridge and Burgundy Manor Plats, made up of the Skyridge Ave, Driftwood Ave, Green Meadow Rd, Mandalay Dr, Crimson Ln area, and West View St, were evaluated for a conversion and upgrade project to coincide with upcoming sanitary sewer expansion. This neighborhood currently has 22 HPS lights that will be converted to LED and no new lights are proposed. New cutoff fixtures will be installed to minimize light pollution and maintain a neighborhood aesthetic.

Public Works has been budgeting annually for streetlight conversions and upgrades with savings realized from usage bills from previous conversations and this project is within the approved 2024 budget. Since there are no new lights proposed requiring underground construction, it is recommended that the project move forward prior to the sanitary sewer expansion to avoid any potential price increases.

Attachments

Consumers Energy customer packets
Resolution

Core Values

Sustainability
Innovation
Public Service
Fiscal Stewardship



A CMS Energy Company

CEM Support Center

Consumers Energy, Lansing Service Center, Rm. 122, 530 W. Willow St., Lansing, MI 48906-4754

September 25, 2024

NOTIFICATION #:
1070483874

OSHTMO TOWNSHIP
7275 W MAIN ST
KALAMAZOO, MI 49009-8210

REFERENCE: SKYRIDGE AVE, KALAMAZOO

Dear Valued Customer,

Thank you for contacting Consumers Energy for your energy needs. Please note the Notification Number above and include it on any correspondence you send. Please note the Account Number, located above the Account Name on your invoice, when submitting payment.

Enclosed for approval and signature is the original Authorization for Change and Resolution covering the replacement and/or installation of streetlight(s). You are responsible for the final restoration.

The estimated cost for your energy request is as follows:

Non Refundable Agreement for Installation of Electric Facilities:

Winter Construction Costs:

\$ -

Installation Charge:

\$ 4,592.00

Additional Costs

Total Estimated Cost:

\$ 4,592.00

Less Prepayment Received:

\$ -

Total Estimated Cost Due:

\$ 4,592.00

Please sign and return the original Authorization for Change and Resolution in the enclosed self-addressed envelope or email to: POBoxCEServiceRequest@cmsenergy.com. Payment in full is required before the installation can be scheduled for construction.

Please review all attached materials carefully and direct inquiries for your request to:

Tanya Gilroy at 616-251-0574 .



A CMS Energy Company

Dear New Electric Customer:

Thank you for your request for electric service. In order to expedite your request and meet your schedule, we have developed the following list of items requiring action by you (Customer Responsibilities). These requirements must be met before we can install your service.

CUSTOMER RESPONSIBILITIES

- 1) Service Location: A copy of our design document may be included in your customer packet. If included, your service entrance equipment should be located at the spot indicated by an "X" as shown on the design document (Form 2804). Install the meter socket 3½ - 5 feet above final grade of this location.
- 2) Meter Socket: Residential metering equipment furnished free of charge, owned and maintained by Consumers Energy includes: meters and one or two position self-contained meter sockets. Contact the company representative assigned to your notification for locations to pick-up the meter socket. For metering installations that require a three or more position self-contained meter socket, the customer will be required to purchase approved meter sockets from a distributor or supplier of their choice.
- 3) Payment: An invoice may be included in your customer packet. If included, the deposit amount on the invoice must be paid prior to installation of your service. Additional charges may apply and will be billed/or a refund issued upon completion of your service installation.
- 4) Site Conditions: The site must be within three (3) inches of final grade before we can install your service. If you have requested an underground service, you will need to clear a 12-foot wide path that is free of building materials, brush, trees, shrubs, etc, along the proposed service route to avoid delays. Our Forestry Department can provide this service for you at an additional charge. For overhead service, nominal line clearing will be provided at no charge. Any extensive line clearing may require additional charges. After your service is installed, we will backfill and place excavated earth over the trench. You are responsible for the final restoration and ensuring that the grading over the trench is at the required level.
- 5) Staking: To avoid damage, you must mark (stake) your existing private underground facilities such as: well, septic systems, sprinkler system, any underground wires, buried LPG tanks, piping, or other unusual buried facilities. These stakes must be apparent when we arrive to install the service. We cannot reimburse you for damage to facilities that are not properly staked. You do not need to stake the utilities' electric, gas or communication lines.
- 6) Mobile Home or Temporary Service: If you requested service to a mobile home or temporary electric service, you will be required to set your own pole or install a pipe for underground service in accordance with Consumers Energy specifications. Contact the Consumers Energy representative assigned to your notification for additional information.
- 7) Construction Repair: If additional line work is required to reach your location due to site conditions or other unusual circumstances, extra charges may be incurred.
- 8) **ELECTRICAL INSPECTION: YOU ARE RESPONSIBLE FOR ENSURING THAT ALL ELECTRICAL PERMITS AND INSPECTIONS ARE OBTAINED BEFORE ANY SERVICE CONNECTIONS CAN BE MADE. WIRINGS MUST COMPLY WITH LOCAL AND STATE ELECTRICAL CODES. NOTE: CAUTION SHOULD BE USED WHEN WORKING INSIDE FUSE PANEL. PANEL MAY BE ENERGIZED AFTER SERVICE IS CONNECTED**
- 9) Additional Charges: Underground services installed during the months of December through April may be subject to an additional charge. Unusual site conditions may also require an additional charge. These charges will be communicated to you in advance of construction.
- 10) Joint Trenching: Discounts for installation of electric and gas service in the same trench (joint trench) are applied in calculating the gas service contribution.
- 11) Usage Rate: Customers are billed at a general service rate while the structure is under construction. If the structure is a home, then the owner of the home, upon receiving a Certificate of Occupancy, should call 1-800-477-5050 to ensure the gas and/or electric rates are changed to an appropriate rate.

Please keep these procedures in a convenient location to review as we proceed with designing your service and constructing the job. If any of the characteristics of the service request are changed and not communicated to us, you may experience delays and/or additional charges.

If you have any questions regarding these requirements please direct inquiries to:

Tanya Gilroy at **616-251-0574**

PLEASE RETURN THE CHECKED DOCUMENTS BELOW TO CONSUMERS ENERGY IN THE ENVELOPE PROVIDED

TO EXPEDITE SERVICE, RETURN VIA EMAIL TO:

POBoxCEServiceRequest@cmsenergy.com

☐

AGREEMENT FOR INSTALLATION (Please return all pages of contracts)
(Form 93, Form 94 and Form 95 - 2 Page Document Each)
(Form 861, Form 862 and Form 230 - 4 Page Document Each)

☒

PAYMENT WITH INVOICE STUB
(BOTTOM STUB IS REQUIRED FOR PROCESSING)

☐

REQUEST FOR ELEVATED CUSTOMER DELIVERY PRESSURE

☒

STANDARD LIGHTING CONTRACT (MUST BE CERTIFIED BY CLERK)
EMAIL STREETLIGHT CONTRACTS TO:
street_lighting@cmsenergy.com

☐

SIGNED CUSTOMER ATTACHMENT PROGRAM (CAP) CONTRACT
(PLEASE ENSURE TO CHECK PAYMENT OPTION ON CONTRACT)

☐

GO READY FORM (FORM 1250)
TO EXPEDITE SERVICE, RETURN VIA EMAIL TO:
POBoxCEServiceRequest@cmsenergy.com

☐

SITE READY PHOTO(S)
TO EXPEDITE SERVICE, RETURN VIA EMAIL TO:
POBoxCEServiceRequest@cmsenergy.com

☐

OTHER:

ELECTRIC SERVICE NOTIFICATION:

GAS SERVICE NOTIFICATION:

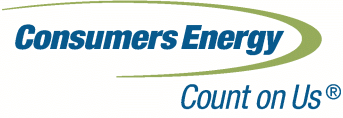
ELECTRIC OH DISTRIBUTION NOTIFICATION:

ELECTRIC UG DISTRIBUTION NOTIFICATION:

GAS MAIN NOTIFICATION:

STREETLIGHT NOTIFICATION:

1070483874



OSHTEMO TOWNSHIP
7275 W MAIN ST
KALAMAZOO MI 49009-8210

Amount Due: \$4,592.00

Please pay by: October 09, 2024

Invoice Number	9327514352
PO Number	
PO Date	
Bill Date	09/25/24

Account: 3000 2280 1439

SKYRIDGE AVE KALAMAZOO - STREETLIGHTING - NOTIFICATION NUMBER (s): 1070483874 -

NONENERGY INVOICE

DESCRIPTION	QUANTITY	UNIT PRICE	AMOUNT
Electric Streetlights-Reimbursable	1.0 EA	\$4,592.00	\$4,592.00
TOTAL DUE:			\$4,592.00
See Page 2 for Payment Options.			
Consumers Energy is regulated by the Michigan Public Service Commission, Lansing, Michigan			

INVOICE QUESTIONS - Contact: Tanya Gilroy -616-251-0574 -

Fold, detach and mail this stub with your check made payable to Consumers Energy. Please write your account number on your check.



CONSUMERS ENERGY
CEM Support Ctr - Lansing RM 122
530 W Willow St
Lansing, MI 48906-4754

PREPAYMENT REQUEST

Account: 3000 2280 1439

Amount Due: \$4,592.00

Please pay by: October 09, 2024

Enclosed:

Ways to pay your nonenergy bill:



Same-day payment
ConsumersEnergy.com
Discover® MasterCard®
Visa® or eCheck



Same-day payment
866-329-9593
Discover® MasterCard®
Visa® or eCheck



By mail
Check, money order
Consumers Energy
Payment Center
P.O. Box 740309
Cincinnati, OH 45274-0309



In person
Cash, check, card
or money order
Varies by authorized payment location
Fee may apply



**AUTHORIZATION FOR CHANGE IN STANDARD LIGHTING
CONTRACT(COMPANY-OWNED) FORM 547**

Contract Number: 100000184687

Consumers Energy Company is authorized as of _____ by the Township of OSHTMO, to make changes, as listed below, in the lighting system(s) covered by the existing Standard Lighting Contract between the Company and the Township of OSHTMO, dated 2/1/2013.

Lighting Type: General Service Unmetered Lighting Rate GUL, Standard High Intensity Discharge

Except for the changes in the lighting system(s) as herein authorized, all provisions of the aforesaid Standard Lighting Contract dated 2/1/2013 shall remain in full force and effect.

Contract Number: 103035156878

Consumers Energy Company is authorized as of _____ by the Township of OSHTMO, to make changes, as listed below, in the lighting system(s) covered by the existing Standard Lighting Contract between the Company and the Township of OSHTMO, dated 10/2/2018.

Lighting Type: General Unmetered Light Emitting Diode Lighting Rate GU-LED

Except for the changes in the lighting system(s) as herein authorized, all provisions of the aforesaid Standard Lighting Contract dated 10/2/2018 shall remain in full force and effect.

Notification Number(s): 1070483874

Comments:

Township of OSHTMO

By: _____

(Signature)

(Printed)

Its: _____

(Title)

This Agreement may be executed and delivered in counterparts, including by a facsimile or an electronic transmission thereof, each of which shall be deemed an original. Any document generated by the parties with respect to this Agreement, including this Agreement, may be imaged and stored electronically and introduced as evidence in any proceeding as if original business records. Neither party will object to the admissibility of such images as evidence in any proceeding on account of having been stored electronically.

RESOLUTION

RESOLVED, that it is hereby deemed advisable to authorize Consumers Energy Company to make changes in the lighting service as provided in the Standard Lighting Contract between the Company and the Township of OSHTMO, dated 2/1/2013, in accordance with the Authorization for Change in Standard Lighting Contract dated _____,

RESOLVED, that it is hereby deemed advisable to authorize Consumers Energy Company to make changes in the lighting service as provided in the Standard Lighting Contract between the Company and the Township of OSHTMO, dated 10/2/2018, in accordance with the Authorization for Change in Standard Lighting Contract dated _____,

heretofore submitted to and considered by this ☐ commission ☐ council ☐ board; and

RESOLVED, further, that the _____ Clerk be and are authorized to execute such authorization for change on the behalf of the Township.

STATE OF MICHIGAN
COUNTY OF KALAMAZOO

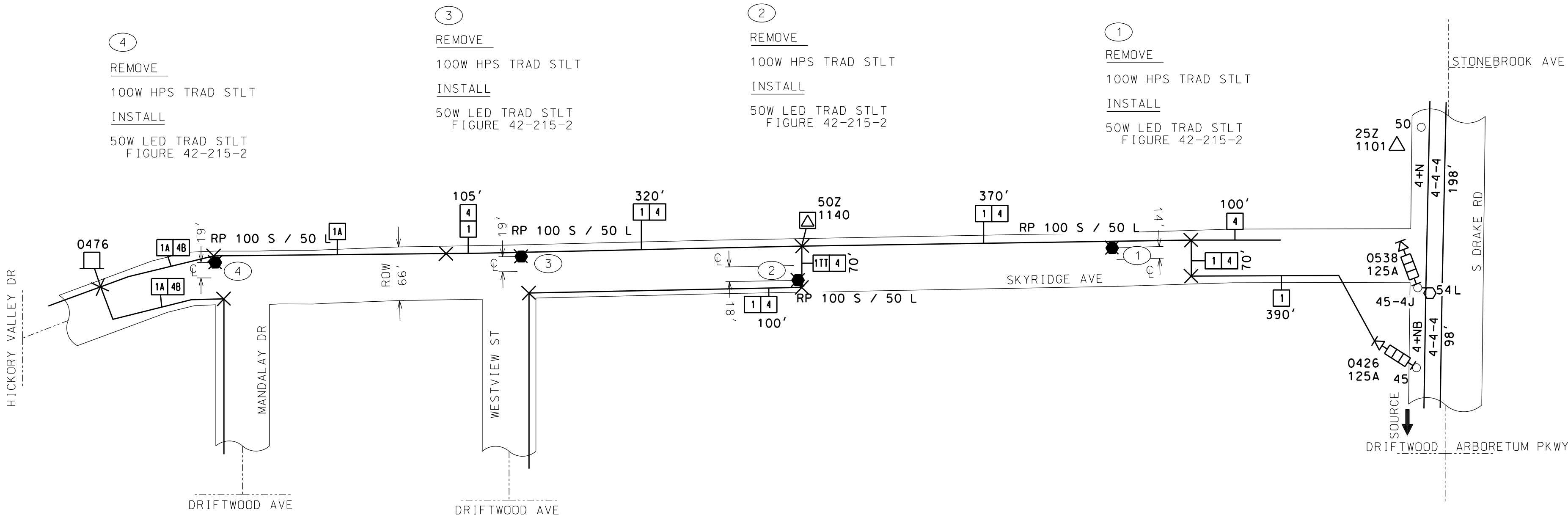
I, _____, clerk of the Township of OSHTMO do hereby certify that the foregoing resolution was duly adopted by the

☐ commission ☐ council ☐ board of said municipality, at the meeting held on _____.

Dated:

Municipal Customer Type: Township

GENERAL NOTES:
-NO OUTAGE REQUIRED
-PRIMARY 4.8/8.32 KV WYE GROUNDED



UNDERGROUND LEGEND

- 1. Single-phase primary
- 2. Open wye primary
- 3. Three-phase primary
- 4. Single-phase secondary
- 5. Combination light and power secondary
- 6. Three-phase power secondary
- 7. Single-phase service
- 8. Combination lighting and power service
- 9. Three-phase power service
- 10. Streetlighting conductor (2/C-10 CU)
- 11. Streetlighting conductor (2/C-8 AL)
- 12. Covered neutral conductor for ducts
- 13. Streetlighting conductor (3/C-1/0 AL)

CONDUIT
[P2] 2" Plastic [P3] 3" Plastic [P4] 4" Plastic [P6] 6" Plastic
[S2] 2" Steel [S3] 3" Steel [S4] 4" Steel [S5] 5" Steel [S6] 6" Steel

- [BR3] Bore 3" Hole [BR4] Bore 4" Hole [BR6] Bore 6" Hole
- PROF. ELEC. CONDUCTORS ONLY
- PROF. GAS LINE ONLY
- PROF. ELEC., GAS AND TELECOMMUNICATIONS
- EXIST. ELEC. CONDUCTORS ONLY
- EXIST. GAS LINE ONLY
- FUTURE ELECTRIC TRENCH

- CABLE MATERIAL AND SIZE
- A. No 2 AL cable, 175 mils, 15KV, or secondary.
 - B. No 1/0 AL cable, 175 mils, 15KV, or secondary.
 - C. No 3/0 AL cable, 175 mils, 15KV, or secondary.
 - D. 350 kcmil AL cable, 175 mils, 15KV, or secondary.
 - E. 500 kcmil copper cable, 175 mils, 15KV, or secondary.
 - F. 750 kcmil AL cable, 175 mils, 15KV, or secondary.
 - FF. 1000 kcmil AL cable (175 mils tree-retardant INS, Jacketed)
 - G. No 1/0 stranded AL cable, 280 mils, 28KV.
 - H. No 3/0 stranded AL cable, 280 mils, 28KV.
 - I. 750 kcmil AL cable, 280 mils, 28KV.
 - J. Cable joint.
 - K. 350 kcmil AL cable, 260 mils, 25KV.
 - M. Marker to locate cable
 - N. Refer to Note on Drawing, N1 for Note 1, etc.
 - R. No 1/0 AL, solid cable, 280 mils, 28KV.
 - T. No 1/0 AL stranded cable 280 mils, 28KV, jacketed
 - TT. No 1/0 AL stranded cable, 260 mils tree-retardant INS, 25KV, Jacketed.
 - V. 350 kcmil AL stranded, 260 mils, 25KV, jacketed.
 - VT. 350 kcmil AL cable, 260 mils tree-retardant INS, 25KV, Jacketed.
 - W. 750 kcmil AL stranded, 280 mils, 28KV, jacketed.
 - WT. 750 kcmil AL cable, 260 mils tree-retardant INS, 25KV, Jacketed.

EX: [3R] - No. 1/0 solid AL cable for three-phase primary

[3G40] - No. 1/0 AL cable for 3-phase primary and 350 AL cable for 1-phase secondary

CONDUCTOR CHANGE

SUBSTATION	WD NO.
MILLERS POINT	1284
CIRCUIT	CKT NO.
CONCORD	03

CE STAKING REQ'D	<input type="checkbox"/> Yes <input checked="" type="checkbox"/> No
FORESTRY REQ'D	<input type="checkbox"/> Yes <input checked="" type="checkbox"/> No

SHEET C SHEET 1 OF 1 SCALE NTS

SKYRIDGE AVE ECNC LED

CM NO. 100007615387

ORDER TYPE	MAT. TYPE	NOTIFICATION NUMBER	DESIGN NUMBER	ORDER NUMBER
ECNC	LED	1070483874	11655837	

JOB PURPOSE:
CUST UPGRADE FROM HPS TO LED FOR 4 STLTs ON SKYRIDGE AVE

UPSTREAM
SECTIONALIZING DEVICE:
TRANSFORMER
LOCATION:
SEE PRINT

CONSUMERS ENERGY CONTACTS

DEPARTMENT	NAME	NUMBER
COORDINATOR	TANYA GILROY	6165304365
DESIGNER	JASON MALLON	8103348730

METER ORDER NUMBER	METER NUMBER	READ	METER LOCATION

KALAMAZOO CO

OSHTEMO TWP T 02S R 12W SEC. 24



A CMS Energy Company

CEM Support Center

Consumers Energy, Lansing Service Center, Rm. 122, 530 W. Willow St., Lansing, MI 48906-4754

September 25, 2024

NOTIFICATION #:
1070483882

OSHTEMO TOWNSHIP
7275 W MAIN ST
KALAMAZOO, MI 49009-8210

REFERENCE: DRIFTWOOD AVE, KALAMAZOO

Dear Valued Customer,

Thank you for contacting Consumers Energy for your energy needs. Please note the Notification Number above and include it on any correspondence you send. Please note the Account Number, located above the Account Name on your invoice, when submitting payment.

Enclosed for approval and signature is the original Authorization for Change and Resolution covering the replacement and/or installation of streetlight(s). You are responsible for the final restoration.

The estimated cost for your energy request is as follows:

Non Refundable Agreement for Installation of Electric Facilities:

Winter Construction Costs:

\$ -

Installation Charge:

\$ 3,459.00

Additional Costs

Total Estimated Cost:

\$ 3,459.00

Less Prepayment Received:

\$ -

Total Estimated Cost Due:

\$ 3,459.00

Please sign and return the original Authorization for Change and Resolution in the enclosed self-addressed envelope or email to: POBoxCEServiceRequest@cmsenergy.com. Payment in full is required before the installation can be scheduled for construction.

Please review all attached materials carefully and direct inquiries for your request to:

Tanya Gilroy at 616-251-0574 .



A CMS Energy Company

Dear New Electric Customer:

Thank you for your request for electric service. In order to expedite your request and meet your schedule, we have developed the following list of items requiring action by you (Customer Responsibilities). These requirements must be met before we can install your service.

CUSTOMER RESPONSIBILITIES

- 1) Service Location: A copy of our design document may be included in your customer packet. If included, your service entrance equipment should be located at the spot indicated by an "X" as shown on the design document (Form 2804). Install the meter socket 3½ - 5 feet above final grade of this location.
- 2) Meter Socket: Residential metering equipment furnished free of charge, owned and maintained by Consumers Energy includes: meters and one or two position self-contained meter sockets. Contact the company representative assigned to your notification for locations to pick-up the meter socket. For metering installations that require a three or more position self-contained meter socket, the customer will be required to purchase approved meter sockets from a distributor or supplier of their choice.
- 3) Payment: An invoice may be included in your customer packet. If included, the deposit amount on the invoice must be paid prior to installation of your service. Additional charges may apply and will be billed/or a refund issued upon completion of your service installation.
- 4) Site Conditions: The site must be within three (3) inches of final grade before we can install your service. If you have requested an underground service, you will need to clear a 12-foot wide path that is free of building materials, brush, trees, shrubs, etc, along the proposed service route to avoid delays. Our Forestry Department can provide this service for you at an additional charge. For overhead service, nominal line clearing will be provided at no charge. Any extensive line clearing may require additional charges. After your service is installed, we will backfill and place excavated earth over the trench. You are responsible for the final restoration and ensuring that the grading over the trench is at the required level.
- 5) Staking: To avoid damage, you must mark (stake) your existing private underground facilities such as: well, septic systems, sprinkler system, any underground wires, buried LPG tanks, piping, or other unusual buried facilities. These stakes must be apparent when we arrive to install the service. We cannot reimburse you for damage to facilities that are not properly staked. You do not need to stake the utilities' electric, gas or communication lines.
- 6) Mobile Home or Temporary Service: If you requested service to a mobile home or temporary electric service, you will be required to set your own pole or install a pipe for underground service in accordance with Consumers Energy specifications. Contact the Consumers Energy representative assigned to your notification for additional information.
- 7) Construction Repair: If additional line work is required to reach your location due to site conditions or other unusual circumstances, extra charges may be incurred.
- 8) **ELECTRICAL INSPECTION: YOU ARE RESPONSIBLE FOR ENSURING THAT ALL ELECTRICAL PERMITS AND INSPECTIONS ARE OBTAINED BEFORE ANY SERVICE CONNECTIONS CAN BE MADE. WIRINGS MUST COMPLY WITH LOCAL AND STATE ELECTRICAL CODES. NOTE: CAUTION SHOULD BE USED WHEN WORKING INSIDE FUSE PANEL. PANEL MAY BE ENERGIZED AFTER SERVICE IS CONNECTED**
- 9) Additional Charges: Underground services installed during the months of December through April may be subject to an additional charge. Unusual site conditions may also require an additional charge. These charges will be communicated to you in advance of construction.
- 10) Joint Trenching: Discounts for installation of electric and gas service in the same trench (joint trench) are applied in calculating the gas service contribution.
- 11) Usage Rate: Customers are billed at a general service rate while the structure is under construction. If the structure is a home, then the owner of the home, upon receiving a Certificate of Occupancy, should call 1-800-477-5050 to ensure the gas and/or electric rates are changed to an appropriate rate.

Please keep these procedures in a convenient location to review as we proceed with designing your service and constructing the job. If any of the characteristics of the service request are changed and not communicated to us, you may experience delays and/or additional charges.

If you have any questions regarding these requirements please direct inquiries to:

Tanya Gilroy at **616-251-0574**

PLEASE RETURN THE CHECKED DOCUMENTS BELOW TO CONSUMERS ENERGY IN THE ENVELOPE PROVIDED

TO EXPEDITE SERVICE, RETURN VIA EMAIL TO:

POBoxCEServiceRequest@cmsenergy.com

☐

AGREEMENT FOR INSTALLATION (Please return all pages of contracts)
(Form 93, Form 94 and Form 95 - 2 Page Document Each)
(Form 861, Form 862 and Form 230 - 4 Page Document Each)

☒

PAYMENT WITH INVOICE STUB
(BOTTOM STUB IS REQUIRED FOR PROCESSING)

☐

REQUEST FOR ELEVATED CUSTOMER DELIVERY PRESSURE

☒

STANDARD LIGHTING CONTRACT (MUST BE CERTIFIED BY CLERK)
EMAIL STREETLIGHT CONTRACTS TO:
street_lighting@cmsenergy.com

☐

SIGNED CUSTOMER ATTACHMENT PROGRAM (CAP) CONTRACT
(PLEASE ENSURE TO CHECK PAYMENT OPTION ON CONTRACT)

☐

GO READY FORM (FORM 1250)
TO EXPEDITE SERVICE, RETURN VIA EMAIL TO:
POBoxCEServiceRequest@cmsenergy.com

☐

SITE READY PHOTO(S)
TO EXPEDITE SERVICE, RETURN VIA EMAIL TO:
POBoxCEServiceRequest@cmsenergy.com

☐

OTHER:

ELECTRIC SERVICE NOTIFICATION:

GAS SERVICE NOTIFICATION:

ELECTRIC OH DISTRIBUTION NOTIFICATION:

ELECTRIC UG DISTRIBUTION NOTIFICATION:

GAS MAIN NOTIFICATION:

STREETLIGHT NOTIFICATION:

1070483882



OSHTEMO TOWNSHIP
7275 W MAIN ST
KALAMAZOO MI 49009-8210

Amount Due: \$3,459.00

Please pay by: October 09, 2024

▶

Invoice Number	9327514358
PO Number	
PO Date	
Bill Date	09/25/24

▶ Account: 3000 2280 1496 ◀

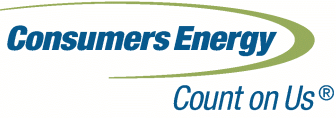
▶ DRIFTWOOD AVE KALAMAZOO - STREETLIGHTING - NOTIFICATION NUMBER (s): 1070483882 -

NONENERGY INVOICE

DESCRIPTION	QUANTITY	UNIT PRICE	AMOUNT
Electric Streetlights	1.0 EA	\$3,459.00	\$3,459.00
TOTAL DUE:			\$3,459.00
See Page 2 for Payment Options.			
Consumers Energy is regulated by the Michigan Public Service Commission, Lansing, Michigan			

INVOICE QUESTIONS - Contact: Tanya Gilroy -616-251-0574 -

Fold, detach and mail this stub with your check made payable to Consumers Energy. Please write your account number on your check.



CONSUMERS ENERGY
CEM Support Ctr - Lansing RM 122
530 W Willow St
Lansing, MI 48906-4754

PREPAYMENT REQUEST

Account: 3000 2280 1496

Amount Due: \$3,459.00

Please pay by: October 09, 2024

▶ Enclosed:

Ways to pay your nonenergy bill:



Same-day payment
ConsumersEnergy.com
Discover® MasterCard®
Visa® or eCheck



Same-day payment
866-329-9593
Discover® MasterCard®
Visa® or eCheck



By mail
Check, money order
Consumers Energy
Payment Center
P.O. Box 740309
Cincinnati, OH 45274-0309



In person
Cash, check, card
or money order
Varies by authorized payment location
Fee may apply



**AUTHORIZATION FOR CHANGE IN STANDARD LIGHTING
CONTRACT(COMPANY-OWNED) FORM 547**

Contract Number: 100000184687

Consumers Energy Company is authorized as of _____ by the Township of OSHTMO, to make changes, as listed below, in the lighting system(s) covered by the existing Standard Lighting Contract between the Company and the Township of OSHTMO, dated 2/1/2013.

Lighting Type: General Service Unmetered Lighting Rate GUL, Standard High Intensity Discharge

Except for the changes in the lighting system(s) as herein authorized, all provisions of the aforesaid Standard Lighting Contract dated 2/1/2013 shall remain in full force and effect.

Contract Number: 103035156878

Consumers Energy Company is authorized as of _____ by the Township of OSHTMO, to make changes, as listed below, in the lighting system(s) covered by the existing Standard Lighting Contract between the Company and the Township of OSHTMO, dated 10/2/2018.

Lighting Type: General Unmetered Light Emitting Diode Lighting Rate GU-LED

Except for the changes in the lighting system(s) as herein authorized, all provisions of the aforesaid Standard Lighting Contract dated 10/2/2018 shall remain in full force and effect.

Notification Number(s): 1070483882

Comments:

Township of OSHTMO

By: _____

(Signature)

(Printed)

Its: _____

(Title)

This Agreement may be executed and delivered in counterparts, including by a facsimile or an electronic transmission thereof, each of which shall be deemed an original. Any document generated by the parties with respect to this Agreement, including this Agreement, may be imaged and stored electronically and introduced as evidence in any proceeding as if original business records. Neither party will object to the admissibility of such images as evidence in any proceeding on account of having been stored electronically.

RESOLUTION

RESOLVED, that it is hereby deemed advisable to authorize Consumers Energy Company to make changes in the lighting service as provided in the Standard Lighting Contract between the Company and the Township of OSHTMO, dated 2/1/2013, in accordance with the Authorization for Change in Standard Lighting Contract dated _____,

RESOLVED, that it is hereby deemed advisable to authorize Consumers Energy Company to make changes in the lighting service as provided in the Standard Lighting Contract between the Company and the Township of OSHTMO, dated 10/2/2018, in accordance with the Authorization for Change in Standard Lighting Contract dated _____,

heretofore submitted to and considered by this ☐ commission ☐ council ☐ board; and

RESOLVED, further, that the _____ Clerk be and are authorized to execute such authorization for change on the behalf of the Township.

STATE OF MICHIGAN
COUNTY OF KALAMAZOO

I, _____, clerk of the Township of OSHTMO do hereby certify that the foregoing resolution was duly adopted by the

☐ commission ☐ council ☐ board of said municipality, at the meeting held on _____.

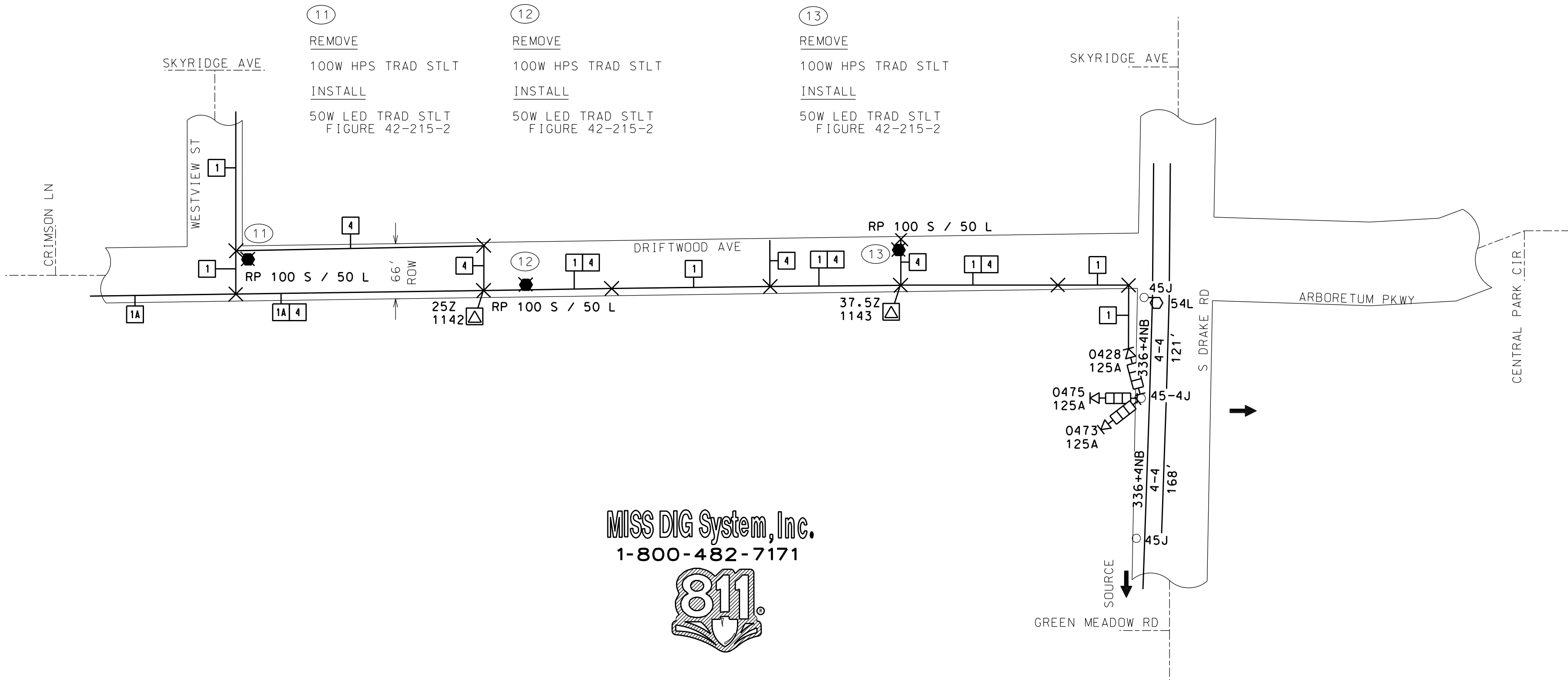
Dated:

Municipal Customer Type: Township

GENERAL NOTES:

-NO OUTAGE REQUIRED

-PRIMARY 4.8/8.32 KV WYE GROUNDED



MISS DIG System, Inc.
1-800-482-7171



UNDERGROUND LEGEND

1. Single-phase primary
2. Open wye primary
3. Three-phase primary
4. Single-phase secondary
5. Combination light and power secondary
6. Three-phase power secondary
7. Single-phase service
8. Combination lighting and power service
9. Three-phase power service
10. Streetlighting conductor (2/C-10 CU)
11. Streetlighting conductor (2/C-8 AL)
12. Covered neutral conductor for ducts
13. Streetlighting conductor (3/C-1/0 AL)
- CONDUIT
P2 2"Plastic P3 3"Plastic P4 4"Plastic P6 6"Plastic
S2 2"Steel S3 3"Steel S4 4"Steel S5 5"Steel S6 6"Steel
- BR3 Bore3"Hole BR4 Bore4"Hole BR6 Bore6"Hole
PROP. ELEC. CONDUCTORS ONLY
PROP. GAS LINE ONLY
PROP. ELEC., GAS AND TELECOMMUNICATIONS
EXIST. ELEC. CONDUCTORS ONLY
EXIST. GAS LINE ONLY
FUTURE ELECTRIC TRENCH

- CABLE MATERIAL AND SIZE
A. No 2 AL cable,175 mils,15KV, or secondary.
B. No 1/0 AL cable,175 mils,15KV, or secondary.
C. No 3/0 AL cable,175 mils,15KV, or secondary.
D. 350 kcmil AL cable,175 mils,15KV, or secondary.
E. 500 kcmil copper cable,175 mils,15KV, or secondary.
F. 750 kcmil AL cable,175 mils, 15KV, or secondary.
FF. 1000 kcmil AL cable (175 mils tree-retardant INS, Jacketed)
G. No 1/0 stranded AL cable, 280 mils, 28KV.
H. No 3/0 stranded AL cable, 280 mils, 28KV.
I. 750 kcmil AL cable, 280 mils, 28KV.
J. Cable joint.
K. 350 kcmil AL cable, 260 mils, 25KV.
M. Marker to locate cable
N. Refer to Note on Drawing, NI for Note 1, etc.
R. No 1/0 AL, solid cable, 280 mils, 28KV.
T. No 1/0 AL stranded cable 280 mils, 28KV, jacketed
TT. No 1/0 AL stranded cable, 260 mils tree-retardant INS, 25KV, Jacketed.
V. 350 kcmil AL stranded, 260 mils, 25KV, jacketed.
VT. 350 kcmil cable, 260 mils tree-retardant INS, 25KV, Jacketed.
W. 750 kcmil AL stranded, 280 mils, 28KV, jacketed.
WT. 750 kcmil AL cable, 260 mils tree-retardant INS, 25KV, Jacketed.
- EX: 3R - No. 1/0 solid AL cable for three-phase primary
3C40 - No. 1/0 AL cable for 3-phase primary and 350 AL cable for 1-phase secondary
CONDUCTOR CHANGE

SUBSTATION	WD NO.
MILLERS POINT	1284
CIRCUIT	CKT NO.
CONCORD	03

Consumers Energy <small>A CMS Energy Company</small>	ELECTRIC
--	-----------------

TLM NUMBER	# OF RODS	OHMS
52122411		
CE STAKING REQ'D	<input type="checkbox"/> Yes <input checked="" type="checkbox"/> No	
FORESTRY REQ'D	<input type="checkbox"/> Yes <input checked="" type="checkbox"/> No	

ORDER TYPE	MAT. TYPE	NOTIFICATION NUMBER	DESIGN NUMBER	ORDER NUMBER
ECNC	LED	1070483882	11677182	

METER ORDER NUMBER	METER NUMBER	READ	METER LOCATION
JOB PURPOSE: CUST REQ UPGRADE FROM HPS TO LED FOR 3 STLTS ON DRIFTWOOD AVE			
UPSTREAM SECTIONALIZING DEVICE: TRANSFORMER LOCATION: SEE PRINT		CONSUMERS ENERGY CONTACTS	
		DEPARTMENT	NAME
		COORDINATOR	TANYA GILROY
		DESIGNER	JASON MALLON
			NUMBER
			6165304365
			8103348730



A CMS Energy Company

CEM Support Center

Consumers Energy, Lansing Service Center, Rm. 122, 530 W. Willow St., Lansing, MI 48906-4754

September 25, 2024

NOTIFICATION #:
1070483884

OSHTEMO TOWNSHIP
7275 W MAIN ST
KALAMAZOO, MI 49009-8210

REFERENCE: Green Meadow Rd, Kalamazoo

Dear Valued Customer,

Thank you for contacting Consumers Energy for your energy needs. Please note the Notification Number above and include it on any correspondence you send. Please note the Account Number, located above the Account Name on your invoice, when submitting payment.

Enclosed for approval and signature is the original Authorization for Change and Resolution covering the replacement and/or installation of streetlight(s). You are responsible for the final restoration.

The estimated cost for your energy request is as follows:

Non Refundable Agreement for Installation of Electric Facilities:

Winter Construction Costs:

\$ -

Installation Charge:

\$ 8,052.00

Additional Costs

Total Estimated Cost:

\$ 8,052.00

Less Prepayment Received:

\$ -

Total Estimated Cost Due:

\$ 8,052.00

Please sign and return the original Authorization for Change and Resolution in the enclosed self-addressed envelope or email to: POBoxCEServiceRequest@cmsenergy.com. Payment in full is required before the installation can be scheduled for construction.

Please review all attached materials carefully and direct inquiries for your request to:

Tanya Gilroy at 616-251-0574 .



A CMS Energy Company

Dear New Electric Customer:

Thank you for your request for electric service. In order to expedite your request and meet your schedule, we have developed the following list of items requiring action by you (Customer Responsibilities). These requirements must be met before we can install your service.

CUSTOMER RESPONSIBILITIES

- 1) Service Location: A copy of our design document may be included in your customer packet. If included, your service entrance equipment should be located at the spot indicated by an "X" as shown on the design document (Form 2804). Install the meter socket 3½ - 5 feet above final grade of this location.
- 2) Meter Socket: Residential metering equipment furnished free of charge, owned and maintained by Consumers Energy includes: meters and one or two position self-contained meter sockets. Contact the company representative assigned to your notification for locations to pick-up the meter socket. For metering installations that require a three or more position self-contained meter socket, the customer will be required to purchase approved meter sockets from a distributor or supplier of their choice.
- 3) Payment: An invoice may be included in your customer packet. If included, the deposit amount on the invoice must be paid prior to installation of your service. Additional charges may apply and will be billed/or a refund issued upon completion of your service installation.
- 4) Site Conditions: The site must be within three (3) inches of final grade before we can install your service. If you have requested an underground service, you will need to clear a 12-foot wide path that is free of building materials, brush, trees, shrubs, etc, along the proposed service route to avoid delays. Our Forestry Department can provide this service for you at an additional charge. For overhead service, nominal line clearing will be provided at no charge. Any extensive line clearing may require additional charges. After your service is installed, we will backfill and place excavated earth over the trench. You are responsible for the final restoration and ensuring that the grading over the trench is at the required level.
- 5) Staking: To avoid damage, you must mark (stake) your existing private underground facilities such as: well, septic systems, sprinkler system, any underground wires, buried LPG tanks, piping, or other unusual buried facilities. These stakes must be apparent when we arrive to install the service. We cannot reimburse you for damage to facilities that are not properly staked. You do not need to stake the utilities' electric, gas or communication lines.
- 6) Mobile Home or Temporary Service: If you requested service to a mobile home or temporary electric service, you will be required to set your own pole or install a pipe for underground service in accordance with Consumers Energy specifications. Contact the Consumers Energy representative assigned to your notification for additional information.
- 7) Construction Repair: If additional line work is required to reach your location due to site conditions or other unusual circumstances, extra charges may be incurred.
- 8) **ELECTRICAL INSPECTION: YOU ARE RESPONSIBLE FOR ENSURING THAT ALL ELECTRICAL PERMITS AND INSPECTIONS ARE OBTAINED BEFORE ANY SERVICE CONNECTIONS CAN BE MADE. WIRINGS MUST COMPLY WITH LOCAL AND STATE ELECTRICAL CODES. NOTE: CAUTION SHOULD BE USED WHEN WORKING INSIDE FUSE PANEL. PANEL MAY BE ENERGIZED AFTER SERVICE IS CONNECTED**
- 9) Additional Charges: Underground services installed during the months of December through April may be subject to an additional charge. Unusual site conditions may also require an additional charge. These charges will be communicated to you in advance of construction.
- 10) Joint Trenching: Discounts for installation of electric and gas service in the same trench (joint trench) are applied in calculating the gas service contribution.
- 11) Usage Rate: Customers are billed at a general service rate while the structure is under construction. If the structure is a home, then the owner of the home, upon receiving a Certificate of Occupancy, should call 1-800-477-5050 to ensure the gas and/or electric rates are changed to an appropriate rate.

Please keep these procedures in a convenient location to review as we proceed with designing your service and constructing the job. If any of the characteristics of the service request are changed and not communicated to us, you may experience delays and/or additional charges.

If you have any questions regarding these requirements please direct inquiries to:

Tanya Gilroy at **616-251-0574**

PLEASE RETURN THE CHECKED DOCUMENTS BELOW TO CONSUMERS ENERGY IN THE ENVELOPE PROVIDED

TO EXPEDITE SERVICE, RETURN VIA EMAIL TO:

POBoxCEServiceRequest@cmsenergy.com

☐

AGREEMENT FOR INSTALLATION (Please return all pages of contracts)
(Form 93, Form 94 and Form 95 - 2 Page Document Each)
(Form 861, Form 862 and Form 230 - 4 Page Document Each)

☒

PAYMENT WITH INVOICE STUB
(BOTTOM STUB IS REQUIRED FOR PROCESSING)

☐

REQUEST FOR ELEVATED CUSTOMER DELIVERY PRESSURE

☒

STANDARD LIGHTING CONTRACT (MUST BE CERTIFIED BY CLERK)
EMAIL STREETLIGHT CONTRACTS TO:
street_lighting@cmsenergy.com

☐

SIGNED CUSTOMER ATTACHMENT PROGRAM (CAP) CONTRACT
(PLEASE ENSURE TO CHECK PAYMENT OPTION ON CONTRACT)

☐

GO READY FORM (FORM 1250)
TO EXPEDITE SERVICE, RETURN VIA EMAIL TO:
POBoxCEServiceRequest@cmsenergy.com

☐

SITE READY PHOTO(S)
TO EXPEDITE SERVICE, RETURN VIA EMAIL TO:
POBoxCEServiceRequest@cmsenergy.com

☐

OTHER:

ELECTRIC SERVICE NOTIFICATION:

GAS SERVICE NOTIFICATION:

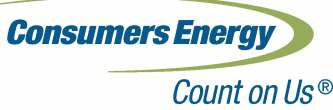
ELECTRIC OH DISTRIBUTION NOTIFICATION:

ELECTRIC UG DISTRIBUTION NOTIFICATION:

GAS MAIN NOTIFICATION:

STREETLIGHT NOTIFICATION:

1070483884



OSHTEMO TOWNSHIP
7275 W MAIN ST
KALAMAZOO MI 49009-8210

Amount Due: \$8,052.00

Please pay by: October 09, 2024

Invoice Number	9327514360
PO Number	
PO Date	
Bill Date	09/25/24

Account: 3000 2280 1512

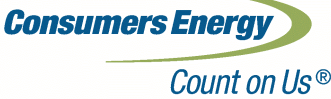
Green Meadow Rd Kalamazoo - STREETLIGHTING - NOTIFICATION NUMBER (s): 1070483884 -

NONENERGY INVOICE

DESCRIPTION	QUANTITY	UNIT PRICE	AMOUNT
Electric Streetlights	1.0 EA	\$8,052.00	\$8,052.00
TOTAL DUE:			\$8,052.00
See Page 2 for Payment Options.			
Consumers Energy is regulated by the Michigan Public Service Commission, Lansing, Michigan			

INVOICE QUESTIONS - Contact: Tanya Gilroy -616-251-0574 -

Fold, detach and mail this stub with your check made payable to Consumers Energy. Please write your account number on your check.



CONSUMERS ENERGY
CEM Support Ctr - Lansing RM 122
530 W Willow St
Lansing, MI 48906-4754

PREPAYMENT REQUEST

Account: 3000 2280 1512

Amount Due: \$8,052.00

Please pay by: October 09, 2024

Enclosed:

Ways to pay your nonenergy bill:



Same-day payment
ConsumersEnergy.com
Discover® MasterCard®
Visa® or eCheck



Same-day payment
866-329-9593
Discover® MasterCard®
Visa® or eCheck



By mail
Check, money order
Consumers Energy
Payment Center
P.O. Box 740309
Cincinnati, OH 45274-0309



In person
Cash, check, card
or money order
Varies by authorized payment location
Fee may apply



**AUTHORIZATION FOR CHANGE IN STANDARD LIGHTING
CONTRACT(COMPANY-OWNED) FORM 547**

Contract Number: 100000184687

Consumers Energy Company is authorized as of _____ by the Township of OSHTMO, to make changes, as listed below, in the lighting system(s) covered by the existing Standard Lighting Contract between the Company and the Township of OSHTMO, dated 2/1/2013.

Lighting Type: General Service Unmetered Lighting Rate GUL, Standard High Intensity Discharge

Except for the changes in the lighting system(s) as herein authorized, all provisions of the aforesaid Standard Lighting Contract dated 2/1/2013 shall remain in full force and effect.

Contract Number: 103035156878

Consumers Energy Company is authorized as of _____ by the Township of OSHTMO, to make changes, as listed below, in the lighting system(s) covered by the existing Standard Lighting Contract between the Company and the Township of OSHTMO, dated 10/2/2018.

Lighting Type: General Unmetered Light Emitting Diode Lighting Rate GU-LED

Except for the changes in the lighting system(s) as herein authorized, all provisions of the aforesaid Standard Lighting Contract dated 10/2/2018 shall remain in full force and effect.

Notification Number(s): 1070483887

Comments:

Township of OSHTMO

By: _____

(Signature)

(Printed)

Its: _____

(Title)

This Agreement may be executed and delivered in counterparts, including by a facsimile or an electronic transmission thereof, each of which shall be deemed an original. Any document generated by the parties with respect to this Agreement, including this Agreement, may be imaged and stored electronically and introduced as evidence in any proceeding as if original business records. Neither party will object to the admissibility of such images as evidence in any proceeding on account of having been stored electronically.

RESOLUTION

RESOLVED, that it is hereby deemed advisable to authorize Consumers Energy Company to make changes in the lighting service as provided in the Standard Lighting Contract between the Company and the Township of OSHTMO, dated 2/1/2013, in accordance with the Authorization for Change in Standard Lighting Contract dated _____,

RESOLVED, that it is hereby deemed advisable to authorize Consumers Energy Company to make changes in the lighting service as provided in the Standard Lighting Contract between the Company and the Township of OSHTMO, dated 10/2/2018, in accordance with the Authorization for Change in Standard Lighting Contract dated _____,

heretofore submitted to and considered by this ☐ commission ☐ council ☐ board; and

RESOLVED, further, that the _____ Clerk be and are authorized to execute such authorization for change on the behalf of the Township.

STATE OF MICHIGAN
COUNTY OF KALAMAZOO

I, _____, clerk of the Township of OSHTMO do hereby certify that the foregoing resolution was duly adopted by the

☐ commission ☐ council ☐ board of said municipality, at the meeting held on _____.

Dated:

Municipal Customer Type: Township

GENERAL SERVICE UNMETERED LIGHTING RATE GUL, STANDARD HIGH INTENSITY DISCHARGE

- (7) 100 watt HPS Post Top Traditional to Remove at location Green Meadow Rd LED CONVERSION ;

GENERAL UNMETERED LIGHT EMITTING DIODE LIGHTING RATE GU-LED

- (7) 50 watt LED White Post Top Traditional to Install at location Green Meadow Rd LED CONVERSION ;

GENERAL NOTES:

- NO OUTAGE REQUIRED
-PRIMARY 4.8/8.32 KV WYE GROUNDED

MISS DIG System, Inc.
1-800-482-7171



UNDERGROUND LEGEND

1. Single-phase primary
2. Open wye primary
3. Three-phase primary
4. Single-phase secondary
5. Combination light and power secondary
6. Three-phase power secondary
7. Single-phase service
8. Combination lighting and power service
9. Three-phase power service
10. Streetlighting conductor (2/C-10 CU)
11. Streetlighting conductor (2/C-10 AL)
12. Covered neutral conductor for ducts
13. Streetlighting conductor (3/C-10 AL)

CONDUIT

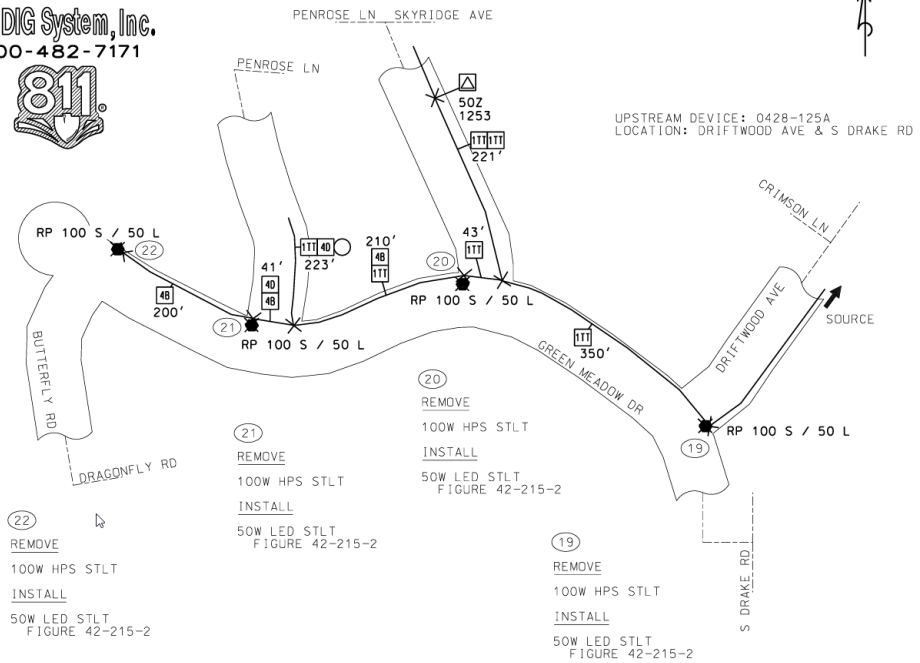
- 2" Plastic [P2] 3" Plastic [P3] 4" Plastic [P4] 6" Plastic [P6]
2" Steel [S2] 3" Steel [S3] 4" Steel [S4] 5" Steel [S5] 6" Steel [S6]
Bore 3" Hole [B3] Bore 4" Hole [B4] Bore 6" Hole [B6]

CABLE MATERIAL AND SIZE

- A. No 2 AL cable, 175 mils, 15KV, or secondary.
B. No 1/0 AL cable, 175 mils, 15KV, or secondary.
C. No 3/0 AL cable, 175 mils, 15KV, or secondary.
D. 350 kcmil AL cable, 175 mils, 15KV, or secondary.
E. 500 kcmil copper cable, 175 mils, 15KV, or secondary.
F. 750 kcmil AL cable, 175 mils, 15KV, or secondary.
FF. 1000 kcmil AL cable, 175 mils, tree-retardant INS, 25KV, jacketed.
G. No 1/0 stranded AL cable, 280 mils, 28KV.
H. No 3/0 stranded AL cable, 280 mils, 28KV.
I. 750 kcmil AL cable, 280 mils, 28KV.
J. Cable joint.
K. 350 kcmil AL cable, 260 mils, 25KV.
M. Worker to locate cable.
N. Refer to Note on Drawing, N1 for Note 1, etc.
R. No 1/0 AL, solid, 280 mils, 28KV.
T. No 1/0 AL, stranded, 280 mils, 28KV, jacketed.
V. 350 kcmil AL, stranded, 260 mils, 25KV, jacketed.
VT. 350 kcmil AL, cable, 260 mils, tree-retardant INS, 25KV, jacketed.
W. 750 kcmil AL, stranded, 280 mils, 28KV, jacketed.
WT. 750 kcmil AL, cable, 260 mils, tree-retardant INS, 25KV, jacketed.

- PROP. ELEC. CONDUCTORS ONLY
--- PROP. GAS LINE ONLY
--- PROP. ELEC., GAS AND TELECOMMUNICATIONS
--- EXIST. ELEC. CONDUCTORS ONLY
--- EXIST. GAS LINE ONLY
--- FUTURE ELECTRIC TRENCH

- EX: [30] - No 1/0 solid AL cable for three-phase primary
[30/40] - No 1/0 AL cable for 3-phase primary and 350 AL cable for 1-phase secondary
--- CONDUCTOR CHANGE



SUBSTATION	WD NO.	METER ORDER NUMBER	METER NUMBER	READ	METER LOCATION
------------	--------	--------------------	--------------	------	----------------

MILLERS POINT	1284				
---------------	------	--	--	--	--

CIRCUIT	CKT NO.	TLM NUMBER	# OF RODS	OHMS	Green Meadow Rd ECNC LED
---------	---------	------------	-----------	------	--------------------------

CONCORD	03	52122414			CM NO. 100007615403
---------	----	----------	--	--	---------------------

CE STAKING REQ'D	Yes	No	ORDER TYPE	MAT. TYPE	NOTIFICATION NUMBER	DESIGN NUMBER	ORDER NUMBER
------------------	-----	----	------------	-----------	---------------------	---------------	--------------

			ECNC	LED	1070483887	11677152	
--	--	--	------	-----	------------	----------	--

FORESTRY REQ'D	Yes	No					
----------------	-----	----	--	--	--	--	--

--	--	--	--	--	--	--	--

JOB PURPOSE:
CUST REQ UPGRADE FROM HPS TO LED FOR 7 STLT ON GREEN MEADOW RD

UPSTREAM SECTIONALIZING DEVICE:

TRANSFORMER LOCATION: SEE PRINT

CONSUMERS ENERGY CONTACTS

DEPARTMENT	NAME	NUMBER
COORDINATOR	TANYA GILROY	6165304365
DESIGNER	JASON MALLON	8103348730

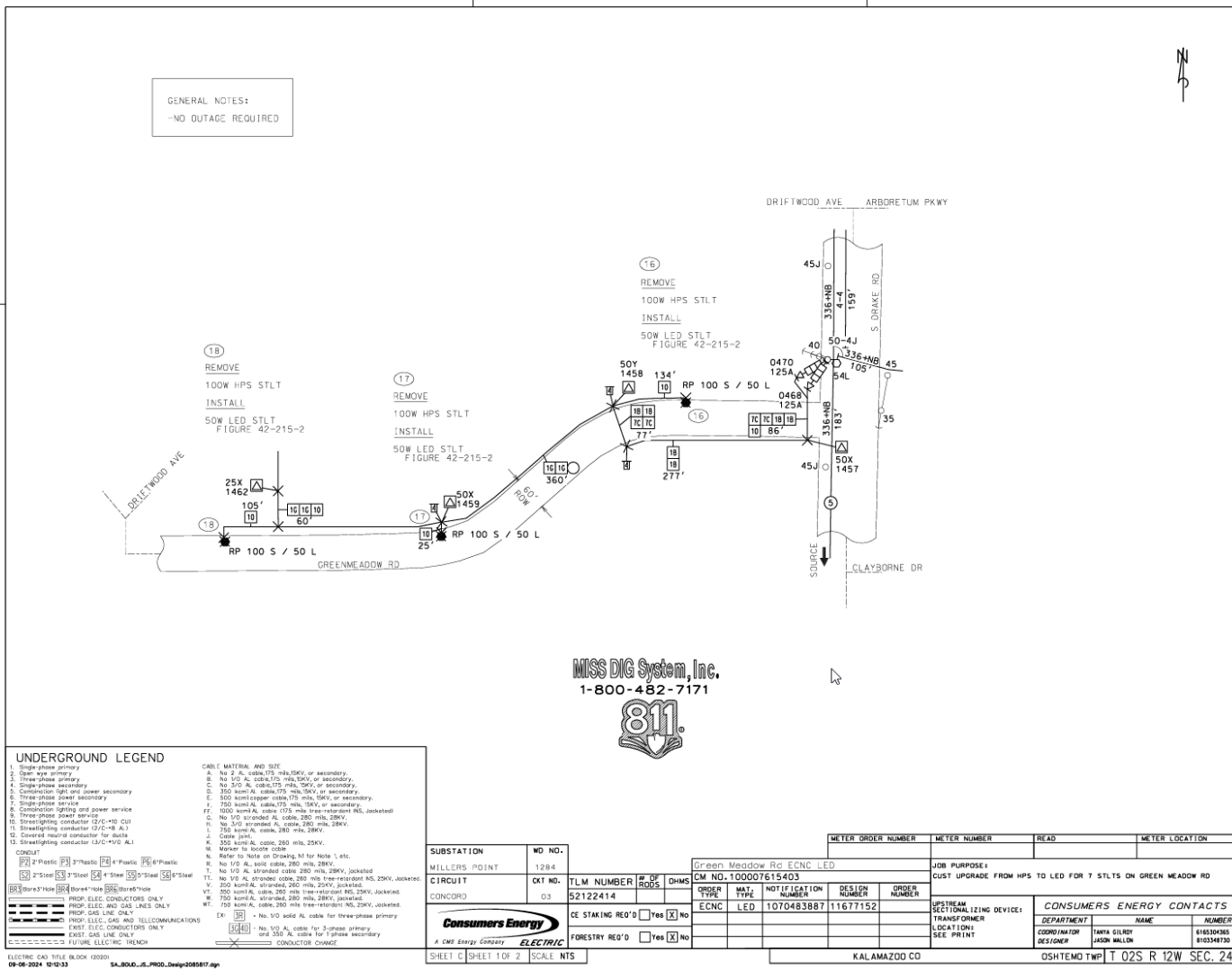
OSHTMO TWP T 02S R 12W SEC. 24

SHEET B SHEET 2 OF 2 SCALE: NTS

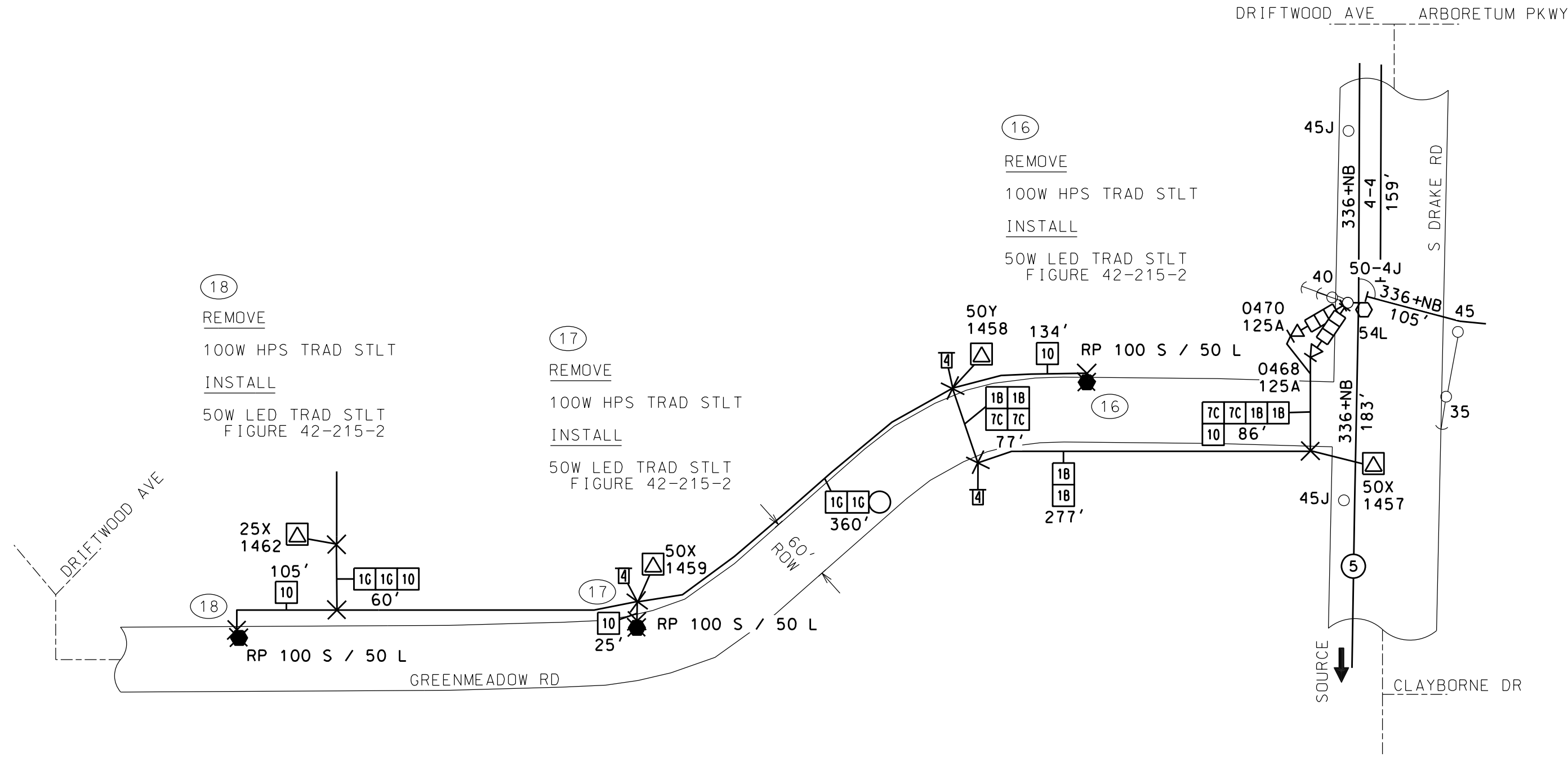
KALAMAZOO CO

ELECTRIC CAD TITLE BLOCK (10/20/20)
09-06-2024 12:16:43

SA_B000_05_PROD_Design2085817.dgn



GENERAL NOTES:
-NO OUTAGE REQUIRED



UNDERGROUND LEGEND

1. Single-phase primary
2. Open wye primary
3. Three-phase primary
4. Single-phase secondary
5. Combination light and power secondary
6. Three-phase power secondary
7. Single-phase service
8. Combination lighting and power service
9. Three-phase power service
10. Streetlighting conductor (2/C-10 CU)
11. Streetlighting conductor (2/C-8 AL)
12. Covered neutral conductor for ducts
13. Streetlighting conductor (3/C-1/0 AL)
- CONDUIT
[P2] 2"Plastic [P3] 3"Plastic [P4] 4"Plastic [P6] 6"Plastic
[S2] 2"Steel [S3] 3"Steel [S4] 4"Steel [S5] 5"Steel [S6] 6"Steel
[BR3] Bore3"Hole [BR4] Bore4"Hole [BR6] Bore6"Hole
- CABLE MATERIAL AND SIZE
A. No 2 AL cable,175 mils,15KV, or secondary.
B. No 1/0 AL cable,175 mils,15KV, or secondary.
C. No 3/0 AL cable,175 mils,15KV, or secondary.
D. 350 kcmil AL cable,175 mils,15KV, or secondary.
E. 500 kcmil copper cable,175 mils,15KV, or secondary.
F. 750 kcmil AL cable,175 mils,15KV, or secondary.
FF. 1000 kcmil AL cable (175 mils tree-retardant INS, Jacketed)
G. No 1/0 stranded AL cable, 280 mils, 28KV.
H. No 3/0 stranded AL cable, 280 mils, 28KV.
I. 750 kcmil AL cable, 280 mils, 28KV.
J. Cable joint.
K. 350 kcmil AL cable, 260 mils, 25KV.
M. Marker to locate cable
N. Refer to Note on Drawing, NI for Note 1, etc.
R. No 1/0 AL, solid, 280 mils, 28KV.
T. No 1/0 AL stranded cable, 280 mils, 28KV, jacketed
TT. No 1/0 AL stranded cable, 260 mils tree-retardant INS, 25KV, Jacketed.
V. 350 kcmil AL stranded, 260 mils, 25KV, jacketed.
VT. 350 kcmil AL cable, 260 mils tree-retardant INS, 25KV, Jacketed.
W. 750 kcmil AL stranded, 280 mils, 28KV, jacketed.
WT. 750 kcmil AL cable, 260 mils tree-retardant INS, 25KV, Jacketed.
- PROF. ELEC. CONDUCTORS ONLY
PROF. ELEC. AND GAS LINES ONLY
PROF. GAS LINE ONLY
PROF. ELEC., GAS AND TELECOMMUNICATIONS
EXIST. ELEC. CONDUCTORS ONLY
EXIST. GAS LINE ONLY
FUTURE ELECTRIC TRENCH
- EX: [3R] = No. 1/0 solid AL cable for three-phase primary
[3G/4D] = No. 1/0 AL cable for 3-phase primary and 350 AL cable for 1-phase secondary
CONDUCTOR CHANGE



UNDERGROUND LEGEND

1. Single-phase primary
2. Open wye primary
3. Three-phase primary
4. Single-phase secondary
5. Combination light and power secondary
6. Three-phase power secondary
7. Single-phase service
8. Combination lighting and power service
9. Three-phase power service
10. Streetlighting conductor (2/C-10 CU)
11. Streetlighting conductor (2/C-8 AL)
12. Covered neutral conductor for ducts
13. Streetlighting conductor (3/C-1/0 AL)
- CONDUIT
[P2] 2"Plastic [P3] 3"Plastic [P4] 4"Plastic [P6] 6"Plastic
[S2] 2"Steel [S3] 3"Steel [S4] 4"Steel [S5] 5"Steel [S6] 6"Steel
[BR3] Bore3"Hole [BR4] Bore4"Hole [BR6] Bore6"Hole
- PROF. ELEC. CONDUCTORS ONLY
PROF. ELEC. AND GAS LINES ONLY
PROF. GAS LINE ONLY
PROF. ELEC., GAS AND TELECOMMUNICATIONS
EXIST. ELEC. CONDUCTORS ONLY
EXIST. GAS LINE ONLY
FUTURE ELECTRIC TRENCH
- CABLE MATERIAL AND SIZE
A. No 2 AL cable,175 mils,15KV, or secondary.
B. No 1/0 AL cable,175 mils,15KV, or secondary.
C. No 3/0 AL cable,175 mils,15KV, or secondary.
D. 350 kcmil AL cable,175 mils,15KV, or secondary.
E. 500 kcmil copper cable,175 mils,15KV, or secondary.
F. 750 kcmil AL cable,175 mils,15KV, or secondary.
FF. 1000 kcmil AL cable (175 mils tree-retardant INS, Jacketed)
G. No 1/0 stranded AL cable, 280 mils, 28KV.
H. No 3/0 stranded AL cable, 280 mils, 28KV.
I. 750 kcmil AL cable, 280 mils, 28KV.
J. Cable joint.
K. 350 kcmil AL cable, 260 mils, 25KV.
M. Marker to locate cable
N. Refer to Note on Drawing, NI for Note 1, etc.
R. No 1/0 AL, solid cable, 280 mils, 28KV.
T. No 1/0 AL stranded cable, 280 mils, 28KV, jacketed
TT. No 1/0 AL stranded cable, 260 mils tree-retardant INS, 25KV, Jacketed.
V. 350 kcmil AL stranded, 260 mils, 25KV, jacketed.
VT. 350 kcmil AL cable, 260 mils tree-retardant INS, 25KV, Jacketed.
W. 750 kcmil AL stranded, 280 mils, 28KV, jacketed.
WT. 750 kcmil AL cable, 260 mils tree-retardant INS, 25KV, Jacketed.
- EX: [3R] = No. 1/0 solid AL cable for three-phase primary
[3G/4D] = No. 1/0 AL cable for 3-phase primary and 350 AL cable for 1-phase secondary
CONDUCTOR CHANGE

SUBSTATION	WD NO.
MILLERS POINT	1284
CIRCUIT	CKT NO.
CONCORD	03

CE STAKING REQ'D	<input type="checkbox"/> Yes <input checked="" type="checkbox"/> No
FORESTRY REQ'D	<input type="checkbox"/> Yes <input checked="" type="checkbox"/> No

SHEET C	SHEET 1 OF 2	SCALE NTS
---------	--------------	-----------

METER ORDER NUMBER					METER NUMBER	READ	METER LOCATION
Green Meadow Rd ECNC LED					JOB PURPOSE:		
CM NO. 100007615403					CUST UPGRADE FROM HPS TO LED FOR 7 STLT'S ON GREEN MEADOW RD		
ORDER TYPE	MAT. TYPE	NOTIFICATION NUMBER	DESIGN NUMBER	ORDER NUMBER	UPSTREAM SECTIONALIZING DEVICE:		
ECNC	LED	1070483887	11677152		TRANSFORMER		
					LOCATION:		
					SEE PRINT		

CONSUMERS ENERGY CONTACTS		
DEPARTMENT	NAME	NUMBER
COORDINATOR	TANYA GILROY	6165304365
DESIGNER	JASON MALLON	8103348730

KALAMAZOO CO

OSHTEMO TWP T 02S R 12W SEC. 24



A CMS Energy Company

CEM Support Center

Consumers Energy, Lansing Service Center, Rm. 122, 530 W. Willow St., Lansing, MI 48906-4754

September 25, 2024

NOTIFICATION #:

1070483878

OSHTEMO TOWNSHIP
7275 W MAIN ST
KALAMAZOO, MI 49009-8210

REFERENCE: MANDALAY DR, KALAMAZOO

Dear Valued Customer,

Thank you for contacting Consumers Energy for your energy needs. Please note the Notification Number above and include it on any correspondence you send. Please note the Account Number, located above the Account Name on your invoice, when submitting payment.

Enclosed for approval and signature is the original Authorization for Change and Resolution covering the replacement and/or installation of streetlight(s). You are responsible for the final restoration.

The estimated cost for your energy request is as follows:

Non Refundable Agreement for Installation of Electric Facilities:

Winter Construction Costs:

\$ -

Installation Charge:

\$ 3,459.00

Additional Costs

Total Estimated Cost:

\$ 3,459.00

Less Prepayment Received:

\$ -

Total Estimated Cost Due:

\$ 3,459.00

Please sign and return the original Authorization for Change and Resolution in the enclosed self-addressed envelope or email to: POBoxCEServiceRequest@cmsenergy.com. Payment in full is required before the installation can be scheduled for construction.

Please review all attached materials carefully and direct inquiries for your request to:

Tanya Gilroy at 616-251-0574 .



A CMS Energy Company

Dear New Electric Customer:

Thank you for your request for electric service. In order to expedite your request and meet your schedule, we have developed the following list of items requiring action by you (Customer Responsibilities). These requirements must be met before we can install your service.

CUSTOMER RESPONSIBILITIES

- 1) Service Location: A copy of our design document may be included in your customer packet. If included, your service entrance equipment should be located at the spot indicated by an "X" as shown on the design document (Form 2804). Install the meter socket 3½ - 5 feet above final grade of this location.
- 2) Meter Socket: Residential metering equipment furnished free of charge, owned and maintained by Consumers Energy includes: meters and one or two position self-contained meter sockets. Contact the company representative assigned to your notification for locations to pick-up the meter socket. For metering installations that require a three or more position self-contained meter socket, the customer will be required to purchase approved meter sockets from a distributor or supplier of their choice.
- 3) Payment: An invoice may be included in your customer packet. If included, the deposit amount on the invoice must be paid prior to installation of your service. Additional charges may apply and will be billed/or a refund issued upon completion of your service installation.
- 4) Site Conditions: The site must be within three (3) inches of final grade before we can install your service. If you have requested an underground service, you will need to clear a 12-foot wide path that is free of building materials, brush, trees, shrubs, etc, along the proposed service route to avoid delays. Our Forestry Department can provide this service for you at an additional charge. For overhead service, nominal line clearing will be provided at no charge. Any extensive line clearing may require additional charges. After your service is installed, we will backfill and place excavated earth over the trench. You are responsible for the final restoration and ensuring that the grading over the trench is at the required level.
- 5) Staking: To avoid damage, you must mark (stake) your existing private underground facilities such as: well, septic systems, sprinkler system, any underground wires, buried LPG tanks, piping, or other unusual buried facilities. These stakes must be apparent when we arrive to install the service. We cannot reimburse you for damage to facilities that are not properly staked. You do not need to stake the utilities' electric, gas or communication lines.
- 6) Mobile Home or Temporary Service: If you requested service to a mobile home or temporary electric service, you will be required to set your own pole or install a pipe for underground service in accordance with Consumers Energy specifications. Contact the Consumers Energy representative assigned to your notification for additional information.
- 7) Construction Repair: If additional line work is required to reach your location due to site conditions or other unusual circumstances, extra charges may be incurred.
- 8) **ELECTRICAL INSPECTION: YOU ARE RESPONSIBLE FOR ENSURING THAT ALL ELECTRICAL PERMITS AND INSPECTIONS ARE OBTAINED BEFORE ANY SERVICE CONNECTIONS CAN BE MADE. WIRINGS MUST COMPLY WITH LOCAL AND STATE ELECTRICAL CODES. NOTE: CAUTION SHOULD BE USED WHEN WORKING INSIDE FUSE PANEL. PANEL MAY BE ENERGIZED AFTER SERVICE IS CONNECTED**
- 9) Additional Charges: Underground services installed during the months of December through April may be subject to an additional charge. Unusual site conditions may also require an additional charge. These charges will be communicated to you in advance of construction.
- 10) Joint Trenching: Discounts for installation of electric and gas service in the same trench (joint trench) are applied in calculating the gas service contribution.
- 11) Usage Rate: Customers are billed at a general service rate while the structure is under construction. If the structure is a home, then the owner of the home, upon receiving a Certificate of Occupancy, should call 1-800-477-5050 to ensure the gas and/or electric rates are changed to an appropriate rate.

Please keep these procedures in a convenient location to review as we proceed with designing your service and constructing the job. If any of the characteristics of the service request are changed and not communicated to us, you may experience delays and/or additional charges.

If you have any questions regarding these requirements please direct inquiries to:

Tanya Gilroy at 616-251-0574

PLEASE RETURN THE CHECKED DOCUMENTS BELOW TO CONSUMERS ENERGY IN THE ENVELOPE PROVIDED

TO EXPEDITE SERVICE, RETURN VIA EMAIL TO:

POBoxCEServiceRequest@cmsenergy.com

☐

AGREEMENT FOR INSTALLATION (Please return all pages of contracts)
(Form 93, Form 94 and Form 95 - 2 Page Document Each)
(Form 861, Form 862 and Form 230 - 4 Page Document Each)

☒

PAYMENT WITH INVOICE STUB
(BOTTOM STUB IS REQUIRED FOR PROCESSING)

☐

REQUEST FOR ELEVATED CUSTOMER DELIVERY PRESSURE

☒

STANDARD LIGHTING CONTRACT (MUST BE CERTIFIED BY CLERK)
EMAIL STREETLIGHT CONTRACTS TO:
street_lighting@cmsenergy.com

☐

SIGNED CUSTOMER ATTACHMENT PROGRAM (CAP) CONTRACT
(PLEASE ENSURE TO CHECK PAYMENT OPTION ON CONTRACT)

☐

GO READY FORM (FORM 1250)
TO EXPEDITE SERVICE, RETURN VIA EMAIL TO:
POBoxCEServiceRequest@cmsenergy.com

☐

SITE READY PHOTO(S)
TO EXPEDITE SERVICE, RETURN VIA EMAIL TO:
POBoxCEServiceRequest@cmsenergy.com

☐

OTHER:

ELECTRIC SERVICE NOTIFICATION:

GAS SERVICE NOTIFICATION:

ELECTRIC OH DISTRIBUTION NOTIFICATION:

ELECTRIC UG DISTRIBUTION NOTIFICATION:

GAS MAIN NOTIFICATION:

STREETLIGHT NOTIFICATION:

1070483878



OSHTEMO TOWNSHIP
7275 W MAIN ST
KALAMAZOO MI 49009-8210

Amount Due: **\$3,459.00**

Please pay by: **October 09, 2024**

Invoice Number	9327514357
PO Number	
PO Date	
Bill Date	09/25/24

Account: **3000 2280 1488**

MANDALAY DR KALAMAZOO - STREETLIGHTING - NOTIFICATION NUMBER (s): 1070483878 -

NONENERGY INVOICE

DESCRIPTION	QUANTITY	UNIT PRICE	AMOUNT
Electric Streetlights	1.0 EA	\$3,459.00	\$3,459.00
TOTAL DUE:			\$3,459.00

See Page 2 for Payment Options.

Consumers Energy is regulated by the Michigan Public Service Commission, Lansing, Michigan

INVOICE QUESTIONS - Contact: Tanya Gilroy -616-251-0574 -

Fold, detach and mail this stub with your check made payable to Consumers Energy. Please write your account number on your check.



CONSUMERS ENERGY
CEM Support Ctr - Lansing RM 122
530 W Willow St
Lansing, MI 48906-4754

PREPAYMENT REQUEST

Account: **3000 2280 1488**

Amount Due: **\$3,459.00**

Please pay by: **October 09, 2024**

Enclosed:

6 330036566490 000003459005 0000 2056 3 300022801488

H

Ways to pay your nonenergy bill:



Same-day payment
ConsumersEnergy.com

Discover® MasterCard®
Visa® or eCheck



Same-day payment
866-329-9593

Discover® MasterCard®
Visa® or eCheck



By mail

Check, money order

Consumers Energy
Payment Center
P.O. Box 740309
Cincinnati, OH 45274-0309



In person

Cash, check, card
or money order

Varies by authorized payment location
Fee may apply



**AUTHORIZATION FOR CHANGE IN STANDARD LIGHTING
CONTRACT(COMPANY-OWNED) FORM 547**

Contract Number: 100000184687

Consumers Energy Company is authorized as of _____ by the Township of OSHTMO, to make changes, as listed below, in the lighting system(s) covered by the existing Standard Lighting Contract between the Company and the Township of OSHTMO, dated 2/1/2013.

Lighting Type: General Service Unmetered Lighting Rate GUL, Standard High Intensity Discharge

Except for the changes in the lighting system(s) as herein authorized, all provisions of the aforesaid Standard Lighting Contract dated 2/1/2013 shall remain in full force and effect.

Contract Number: 103035156878

Consumers Energy Company is authorized as of _____ by the Township of OSHTMO, to make changes, as listed below, in the lighting system(s) covered by the existing Standard Lighting Contract between the Company and the Township of OSHTMO, dated 10/2/2018.

Lighting Type: General Unmetered Light Emitting Diode Lighting Rate GU-LED

Except for the changes in the lighting system(s) as herein authorized, all provisions of the aforesaid Standard Lighting Contract dated 10/2/2018 shall remain in full force and effect.

Notification Number(s): 1070483878

Comments:

Township of OSHTMO

By: _____

(Signature)

(Printed)

Its: _____

(Title)

This Agreement may be executed and delivered in counterparts, including by a facsimile or an electronic transmission thereof, each of which shall be deemed an original. Any document generated by the parties with respect to this Agreement, including this Agreement, may be imaged and stored electronically and introduced as evidence in any proceeding as if original business records. Neither party will object to the admissibility of such images as evidence in any proceeding on account of having been stored electronically.

RESOLUTION

RESOLVED, that it is hereby deemed advisable to authorize Consumers Energy Company to make changes in the lighting service as provided in the Standard Lighting Contract between the Company and the Township of OSHTMO, dated 2/1/2013, in accordance with the Authorization for Change in Standard Lighting Contract dated _____,

RESOLVED, that it is hereby deemed advisable to authorize Consumers Energy Company to make changes in the lighting service as provided in the Standard Lighting Contract between the Company and the Township of OSHTMO, dated 10/2/2018, in accordance with the Authorization for Change in Standard Lighting Contract dated _____,

heretofore submitted to and considered by this ☐ commission ☐ council ☐ board; and

RESOLVED, further, that the _____ Clerk be and are authorized to execute such authorization for change on the behalf of the Township.

STATE OF MICHIGAN
COUNTY OF KALAMAZOO

I, _____, clerk of the Township of OSHTMO do hereby certify that the foregoing resolution was duly adopted by the

☐ commission ☐ council ☐ board of said municipality, at the meeting held on _____.

Dated:

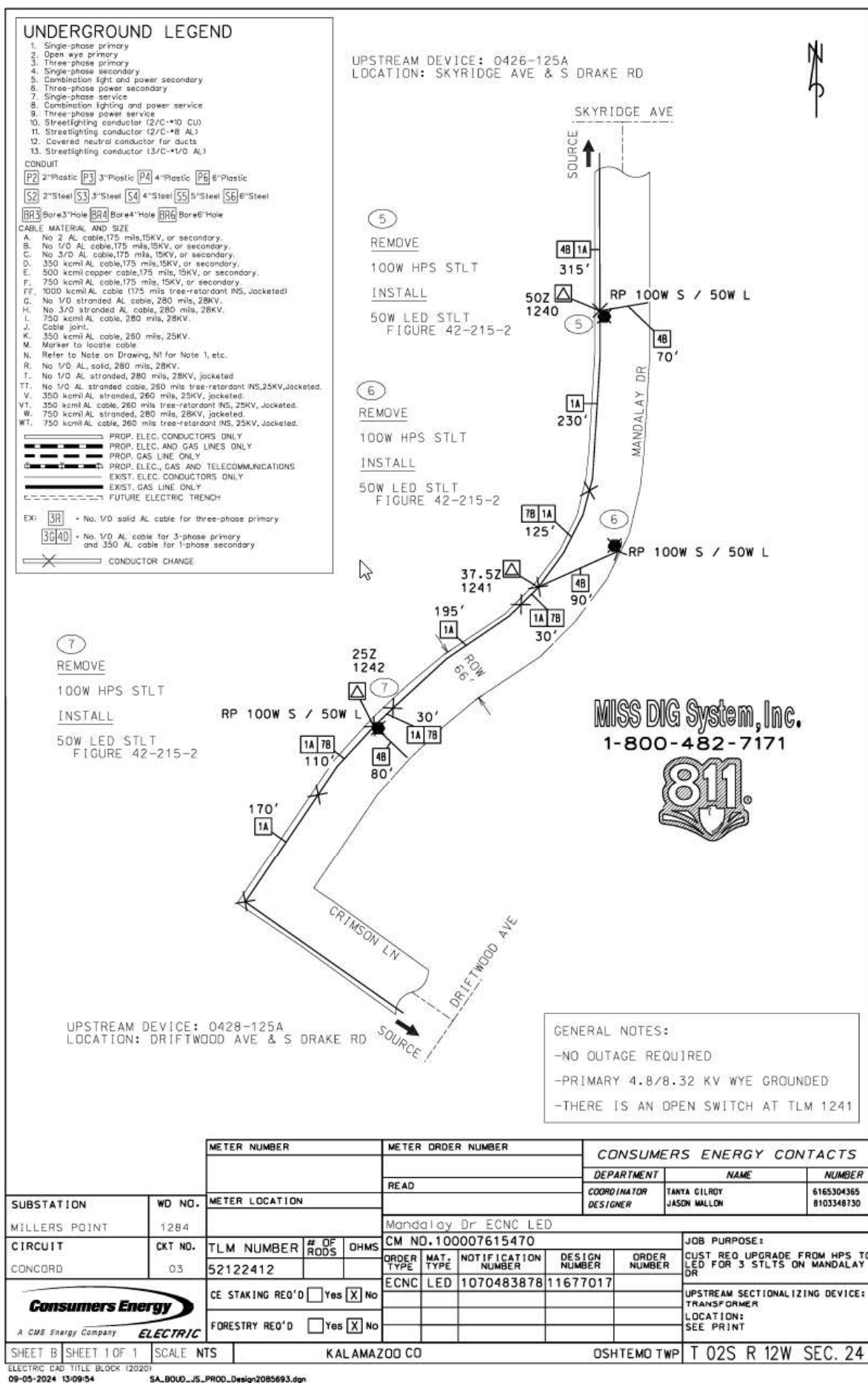
Municipal Customer Type: Township

GENERAL SERVICE UNMETERED LIGHTING RATE GUL, STANDARD HIGH INTENSITY DISCHARGE

- (3) 100 watt HPS Post Top Traditional to Remove at location Mandalay Dr LED CONVERSION;

GENERAL UNMETERED LIGHT EMITTING DIODE LIGHTING RATE GU-LED

- (3) 50 watt LED White Post Top Traditional to Install at location Mandalay Dr LED CONVERSION;



UNDERGROUND LEGEND

1. Single-phase primary
2. Open wye primary
3. Three-phase primary
4. Single-phase secondary
5. Combination light and power secondary
6. Three-phase power secondary
7. Single-phase service
8. Combination lighting and power service
9. Three-phase power service
10. Streetlighting conductor (2/C-10 CU)
11. Streetlighting conductor (2/C-8 AL)
12. Covered neutral conductor for ducts
13. Streetlighting conductor (3/C-1/0 AL)

CONDUIT

P2 2" Plastic P3 3" Plastic P4 4" Plastic P6 6" Plastic

S2 2" Steel S3 3" Steel S4 4" Steel S5 5" Steel S6 6" Steel

BR3 Bore 3" Hole BR4 Bore 4" Hole BR6 Bore 6" Hole

CABLE MATERIAL AND SIZE

- A. No 2 AL cable, 175 mils, 15KV, or secondary.
 B. No 1/0 AL cable, 175 mils, 15KV, or secondary.
 C. No 3/0 AL cable, 175 mils, 15KV, or secondary.
 D. 350 kcmil AL cable, 175 mils, 15KV, or secondary.
 E. 500 kcmil copper cable, 175 mils, 15KV, or secondary.
 F. 750 kcmil AL cable, 175 mils, 15KV, or secondary.
 FF. 1000 kcmil AL cable (175 mils tree-retardant INS, Jacketed)
 G. No 1/0 stranded AL cable, 280 mils, 28KV.
 H. No 3/0 stranded AL cable, 280 mils, 28KV.
 I. 750 kcmil AL cable, 280 mils, 28KV.
 J. Cable joint.
 K. 350 kcmil AL cable, 260 mils, 25KV.
 M. Marker to locate cable
 N. Refer to Note on Drawing, N1 for Note 1, etc.
 R. No 1/0 AL, solid, 280 mils, 28KV.
 T. No 1/0 AL stranded, 280 mils, 28KV, jacketed
 TT. No 1/0 stranded cable, 260 mils tree-retardant INS, 25KV, jacketed.
 V. 350 kcmil AL, stranded, 260 mils, 25KV, jacketed.
 VT. 350 kcmil AL, 260 mils tree-retardant INS, 25KV, jacketed.
 W. 750 kcmil AL, stranded, 280 mils, 28KV, jacketed.
 WT. 750 kcmil AL cable, 260 mils tree-retardant INS, 25KV, jacketed.

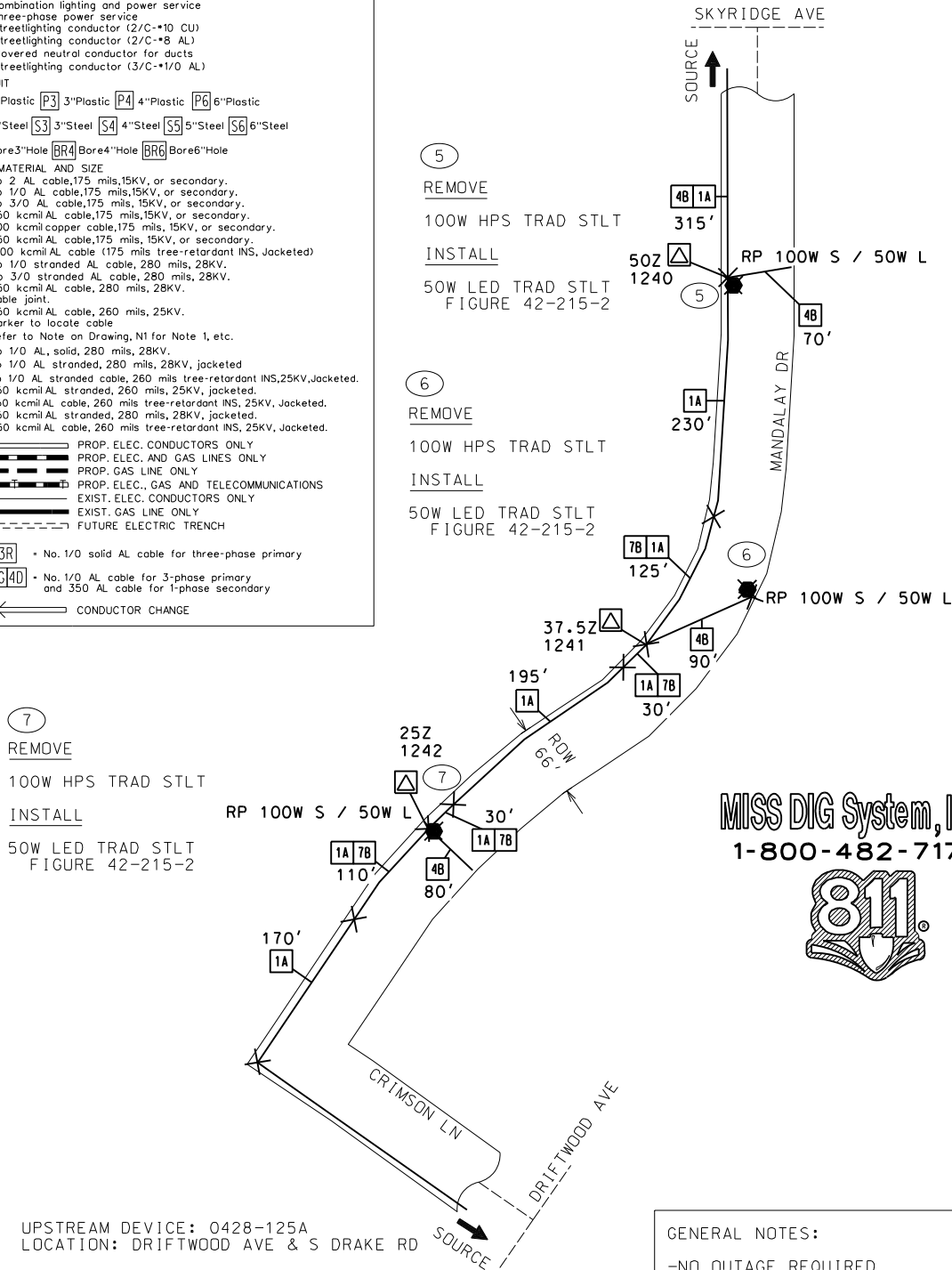
- PROP. ELEC. CONDUCTORS ONLY
 PROP. ELEC. AND GAS LINES ONLY
 PROP. GAS LINE ONLY
 PROP. ELEC., GAS AND TELECOMMUNICATIONS
 EXIST. ELEC. CONDUCTORS ONLY
 EXIST. GAS LINE ONLY
 FUTURE ELECTRIC TRENCH

EX: 3R - No. 1/0 solid AL cable for three-phase primary

3C40 - No. 1/0 AL cable for 3-phase primary
 and 350 AL cable for 1-phase secondary

CONDUCTOR CHANGE

UPSTREAM DEVICE: 0426-125A
 LOCATION: SKYRIDGE AVE & S DRAKE RD



MISS DIG System, Inc.
 1-800-482-7171



GENERAL NOTES:

- NO OUTAGE REQUIRED
- PRIMARY 4.8/8.32 KV WYE GROUNDED
- THERE IS AN OPEN SWITCH AT TLM 1241

SUBSTATION		WD NO.	METER NUMBER		METER ORDER NUMBER		CONSUMERS ENERGY CONTACTS		
MILLERS POINT		1284	METER LOCATION		READ		DEPARTMENT	NAME	NUMBER
CIRCUIT		CKT NO.	TLM NUMBER		CM NO.100007615470		COORDINATOR	TANYA GILROY	6165304365
CONCORD		03	52122412		52122412		DESIGNER	JASON MALLON	8103348730
CE STAKING REQ'D <input type="checkbox"/> Yes <input checked="" type="checkbox"/> No			FORESTRY REQ'D <input type="checkbox"/> Yes <input checked="" type="checkbox"/> No			JOB PURPOSE:			
ELECTRIC			ELECTRIC			CUST REQ UPGRADE FROM HPS TO LED FOR 3 STLT ON MANDALAY DR			
UPSTREAM SECTIONALIZING DEVICE: TRANSFORMER			LOCATION: SEE PRINT			61			
SHEET B		SHEET 1 OF 1	SCALE NTS		KALAMAZOO CO		OSHTMO TWP		T 02S R 12W SEC. 24



A CMS Energy Company

CEM Support Center

Consumers Energy, Lansing Service Center, Rm. 122, 530 W. Willow St., Lansing, MI 48906-4754

September 25, 2024

NOTIFICATION #:

1070483884

OSHTEMO TOWNSHIP
7275 W MAIN ST
KALAMAZOO, MI 49009-8210

REFERENCE: Crimson Lane, KALAMAZOO

Dear Valued Customer,

Thank you for contacting Consumers Energy for your energy needs. Please note the Notification Number above and include it on any correspondence you send. Please note the Account Number, located above the Account Name on your invoice, when submitting payment.

Enclosed for approval and signature is the original Authorization for Change and Resolution covering the replacement and/or installation of streetlight(s). You are responsible for the final restoration.

The estimated cost for your energy request is as follows:

Non Refundable Agreement for Installation of Electric Facilities:

Winter Construction Costs:

\$ -

Installation Charge:

\$ 3,459.00

Additional Costs

Total Estimated Cost:

\$ 3,459.00

Less Prepayment Received:

\$ -

Total Estimated Cost Due:

\$ 3,459.00

Please sign and return the original Authorization for Change and Resolution in the enclosed self-addressed envelope or email to: POBoxCEServiceRequest@cmsenergy.com. Payment in full is required before the installation can be scheduled for construction.

Please review all attached materials carefully and direct inquiries for your request to:

Tanya Gilroy at 616-251-0574 .



A CMS Energy Company

Dear New Electric Customer:

Thank you for your request for electric service. In order to expedite your request and meet your schedule, we have developed the following list of items requiring action by you (Customer Responsibilities). These requirements must be met before we can install your service.

CUSTOMER RESPONSIBILITIES

- 1) Service Location: A copy of our design document may be included in your customer packet. If included, your service entrance equipment should be located at the spot indicated by an "X" as shown on the design document (Form 2804). Install the meter socket 3½ - 5 feet above final grade of this location.
- 2) Meter Socket: Residential metering equipment furnished free of charge, owned and maintained by Consumers Energy includes: meters and one or two position self-contained meter sockets. Contact the company representative assigned to your notification for locations to pick-up the meter socket. For metering installations that require a three or more position self-contained meter socket, the customer will be required to purchase approved meter sockets from a distributor or supplier of their choice.
- 3) Payment: An invoice may be included in your customer packet. If included, the deposit amount on the invoice must be paid prior to installation of your service. Additional charges may apply and will be billed/or a refund issued upon completion of your service installation.
- 4) Site Conditions: The site must be within three (3) inches of final grade before we can install your service. If you have requested an underground service, you will need to clear a 12-foot wide path that is free of building materials, brush, trees, shrubs, etc, along the proposed service route to avoid delays. Our Forestry Department can provide this service for you at an additional charge. For overhead service, nominal line clearing will be provided at no charge. Any extensive line clearing may require additional charges. After your service is installed, we will backfill and place excavated earth over the trench. You are responsible for the final restoration and ensuring that the grading over the trench is at the required level.
- 5) Staking: To avoid damage, you must mark (stake) your existing private underground facilities such as: well, septic systems, sprinkler system, any underground wires, buried LPG tanks, piping, or other unusual buried facilities. These stakes must be apparent when we arrive to install the service. We cannot reimburse you for damage to facilities that are not properly staked. You do not need to stake the utilities' electric, gas or communication lines.
- 6) Mobile Home or Temporary Service: If you requested service to a mobile home or temporary electric service, you will be required to set your own pole or install a pipe for underground service in accordance with Consumers Energy specifications. Contact the Consumers Energy representative assigned to your notification for additional information.
- 7) Construction Repair: If additional line work is required to reach your location due to site conditions or other unusual circumstances, extra charges may be incurred.
- 8) **ELECTRICAL INSPECTION: YOU ARE RESPONSIBLE FOR ENSURING THAT ALL ELECTRICAL PERMITS AND INSPECTIONS ARE OBTAINED BEFORE ANY SERVICE CONNECTIONS CAN BE MADE. WIRINGS MUST COMPLY WITH LOCAL AND STATE ELECTRICAL CODES. NOTE: CAUTION SHOULD BE USED WHEN WORKING INSIDE FUSE PANEL. PANEL MAY BE ENERGIZED AFTER SERVICE IS CONNECTED**
- 9) Additional Charges: Underground services installed during the months of December through April may be subject to an additional charge. Unusual site conditions may also require an additional charge. These charges will be communicated to you in advance of construction.
- 10) Joint Trenching: Discounts for installation of electric and gas service in the same trench (joint trench) are applied in calculating the gas service contribution.
- 11) Usage Rate: Customers are billed at a general service rate while the structure is under construction. If the structure is a home, then the owner of the home, upon receiving a Certificate of Occupancy, should call 1-800-477-5050 to ensure the gas and/or electric rates are changed to an appropriate rate.

Please keep these procedures in a convenient location to review as we proceed with designing your service and constructing the job. If any of the characteristics of the service request are changed and not communicated to us, you may experience delays and/or additional charges.

If you have any questions regarding these requirements please direct inquiries to:

Tanya Gilroy at 616-251-0574

PLEASE RETURN THE CHECKED DOCUMENTS BELOW TO CONSUMERS ENERGY IN THE ENVELOPE PROVIDED

TO EXPEDITE SERVICE, RETURN VIA EMAIL TO:

POBoxCEServiceRequest@cmsenergy.com

☐

AGREEMENT FOR INSTALLATION (Please return all pages of contracts)
(Form 93, Form 94 and Form 95 - 2 Page Document Each)
(Form 861, Form 862 and Form 230 - 4 Page Document Each)

☒

PAYMENT WITH INVOICE STUB
(BOTTOM STUB IS REQUIRED FOR PROCESSING)

☐

REQUEST FOR ELEVATED CUSTOMER DELIVERY PRESSURE

☒

STANDARD LIGHTING CONTRACT (MUST BE CERTIFIED BY CLERK)
EMAIL STREETLIGHT CONTRACTS TO:
street_lighting@cmsenergy.com

☐

SIGNED CUSTOMER ATTACHMENT PROGRAM (CAP) CONTRACT
(PLEASE ENSURE TO CHECK PAYMENT OPTION ON CONTRACT)

☐

GO READY FORM (FORM 1250)
TO EXPEDITE SERVICE, RETURN VIA EMAIL TO:
POBoxCEServiceRequest@cmsenergy.com

☐

SITE READY PHOTO(S)
TO EXPEDITE SERVICE, RETURN VIA EMAIL TO:
POBoxCEServiceRequest@cmsenergy.com

☐

OTHER:

ELECTRIC SERVICE NOTIFICATION:

GAS SERVICE NOTIFICATION:

ELECTRIC OH DISTRIBUTION NOTIFICATION:

ELECTRIC UG DISTRIBUTION NOTIFICATION:

GAS MAIN NOTIFICATION:

STREETLIGHT NOTIFICATION:

1070483884



OSHTMO TOWNSHIP
7275 W MAIN ST
KALAMAZOO MI 49009-8210

Amount Due: **\$3,459.00**

Please pay by: **October 09, 2024**

Invoice Number	9327514359
PO Number	
PO Date	
Bill Date	09/25/24

Account: **3000 2280 1504**

Crimson Lane KALAMAZOO - STREETLIGHTING - NOTIFICATION NUMBER (s): 1070483884 -

NONENERGY INVOICE

DESCRIPTION	QUANTITY	UNIT PRICE	AMOUNT
Electric Streetlights	1.0 EA	\$3,459.00	\$3,459.00
TOTAL DUE:			\$3,459.00

See Page 2 for Payment Options.

Consumers Energy is regulated by the Michigan Public Service Commission, Lansing, Michigan

INVOICE QUESTIONS - Contact: Tanya Gilroy -616-251-0574 -

Fold, detach and mail this stub with your check made payable to Consumers Energy. Please write your account number on your check.



CONSUMERS ENERGY
CEM Support Ctr - Lansing RM 122
530 W Willow St
Lansing, MI 48906-4754

PREPAYMENT REQUEST

Account: **3000 2280 1504**

Amount Due: **\$3,459.00**

Please pay by: **October 09, 2024**

Enclosed:

Ways to pay your nonenergy bill:



Same-day payment
ConsumersEnergy.com

Discover® MasterCard®
Visa® or eCheck



Same-day payment
866-329-9593

Discover® MasterCard®
Visa® or eCheck



By mail
Check, money order

Consumers Energy
Payment Center
P.O. Box 740309
Cincinnati, OH 45274-0309



In person
Cash, check, card
or money order

Varies by authorized payment location
Fee may apply



**AUTHORIZATION FOR CHANGE IN STANDARD LIGHTING
CONTRACT(COMPANY-OWNED) FORM 547**

Contract Number: 100000184687

Consumers Energy Company is authorized as of _____ by the Township of OSHTMO, to make changes, as listed below, in the lighting system(s) covered by the existing Standard Lighting Contract between the Company and the Township of OSHTMO, dated 2/1/2013.

Lighting Type: General Service Unmetered Lighting Rate GUL, Standard High Intensity Discharge

Except for the changes in the lighting system(s) as herein authorized, all provisions of the aforesaid Standard Lighting Contract dated 2/1/2013 shall remain in full force and effect.

Contract Number: 103035156878

Consumers Energy Company is authorized as of _____ by the Township of OSHTMO, to make changes, as listed below, in the lighting system(s) covered by the existing Standard Lighting Contract between the Company and the Township of OSHTMO, dated 10/2/2018.

Lighting Type: General Unmetered Light Emitting Diode Lighting Rate GU-LED

Except for the changes in the lighting system(s) as herein authorized, all provisions of the aforesaid Standard Lighting Contract dated 10/2/2018 shall remain in full force and effect.

Notification Number(s): 1070483884

Comments:

Township of OSHTMO

By: _____

(Signature)

(Printed)

Its: _____

(Title)

This Agreement may be executed and delivered in counterparts, including by a facsimile or an electronic transmission thereof, each of which shall be deemed an original. Any document generated by the parties with respect to this Agreement, including this Agreement, may be imaged and stored electronically and introduced as evidence in any proceeding as if original business records. Neither party will object to the admissibility of such images as evidence in any proceeding on account of having been stored electronically.

RESOLUTION

RESOLVED, that it is hereby deemed advisable to authorize Consumers Energy Company to make changes in the lighting service as provided in the Standard Lighting Contract between the Company and the Township of OSHTMO, dated 2/1/2013, in accordance with the Authorization for Change in Standard Lighting Contract dated _____,

RESOLVED, that it is hereby deemed advisable to authorize Consumers Energy Company to make changes in the lighting service as provided in the Standard Lighting Contract between the Company and the Township of OSHTMO, dated 10/2/2018, in accordance with the Authorization for Change in Standard Lighting Contract dated _____,

heretofore submitted to and considered by this ☐ commission ☐ council ☐ board; and

RESOLVED, further, that the _____ Clerk be and are authorized to execute such authorization for change on the behalf of the Township.

STATE OF MICHIGAN
COUNTY OF KALAMAZOO

I, _____, clerk of the Township of OSHTMO do hereby certify that the foregoing resolution was duly adopted by the

☐ commission ☐ council ☐ board of said municipality, at the meeting held on _____.

Dated:

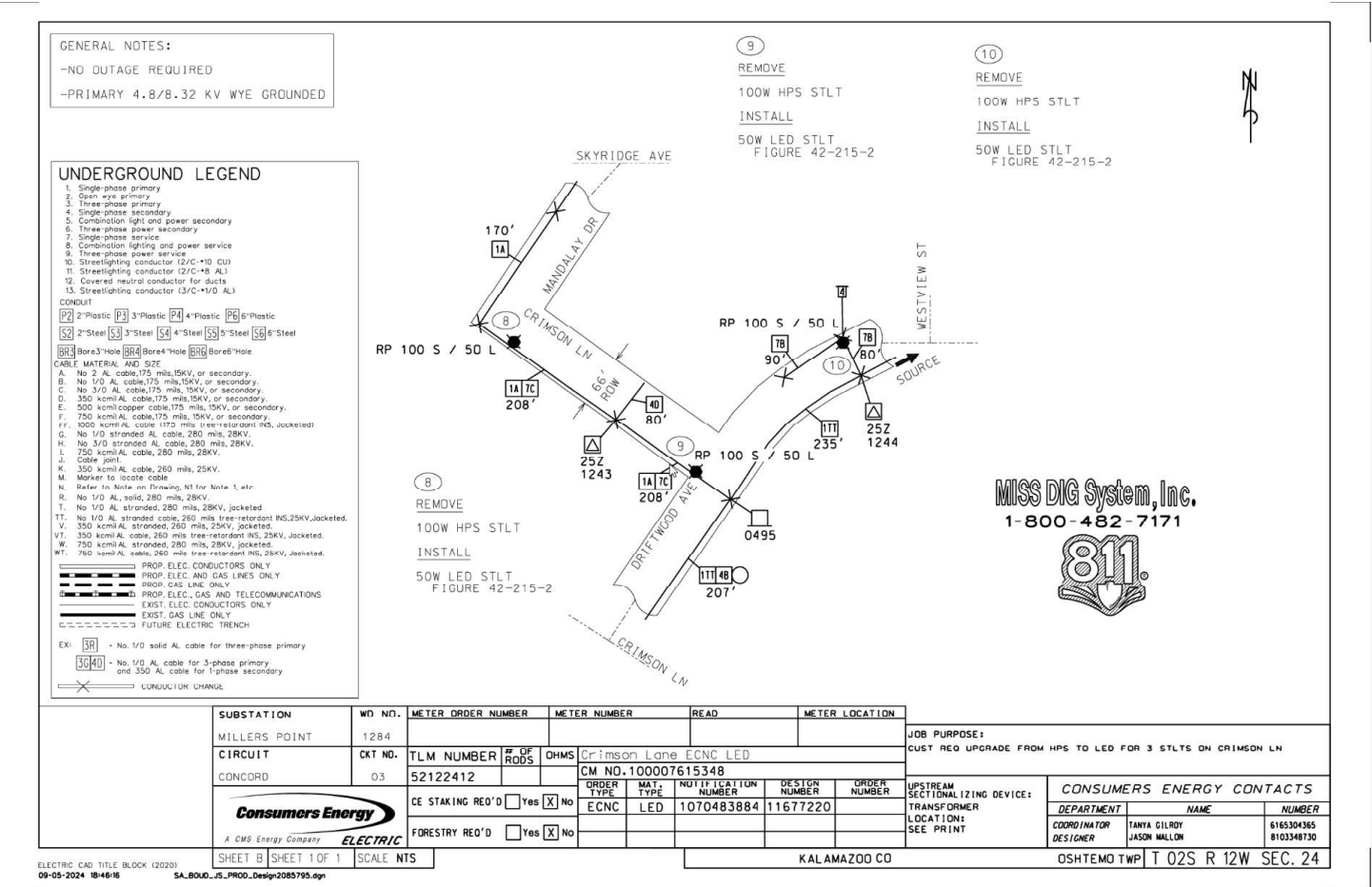
Municipal Customer Type: Township

GENERAL SERVICE UNMETERED LIGHTING RATE GUL, STANDARD HIGH INTENSITY DISCHARGE

- (3) 100 watt HPS Post Top Traditional to Remove at location Crimson Lane LED UPGRADE;

GENERAL UNMETERED LIGHT EMITTING DIODE LIGHTING RATE GU-LED

- (3) 50 watt LED White Post Top Traditional to Install at location Crimson Lane LED UPGRADE;



GENERAL NOTES:

- NO OUTAGE REQUIRED
- PRIMARY 4-8/8.32 KV WYE GROUNDED

UNDERGROUND LEGEND

1. Single-phase primary
2. Three-phase primary
3. Three-phase secondary
4. Single-phase secondary
5. Combination light and power secondary
6. Three-phase power secondary
7. Combination light and power service
8. Combination lighting and power service
9. Three-phase power service
10. Streetlighting conductor (27C-10 CU)
11. Streetlighting conductor (27C-8 AL)
12. Covered neutral conductor for ducts
13. Streetlighting conductor (3/C-1/0 AL)

CONDUIT

- [P2] 2" Plastic [P3] 3" Plastic [P4] 4" Plastic [P6] 6" Plastic
[S2] 2" Steel [S3] 3" Steel [S4] 4" Steel [S5] 5" Steel [S6] 6" Steel
[B3] Bore 3" Hole [B4] Bore 4" Hole [B6] Bore 6" Hole

CABLE MATERIAL AND SIZE

- A. No. 1/0 AL cable, 15KV, or secondary.
B. No. 1/0 AL cable, 175 mls, 15KV, or secondary.
C. No. 3/0 AL cable, 175 mls, 15KV, or secondary.
D. 350 kcmil AL cable, 175 mls, 15KV, or secondary.
E. 500 kcmil copper cable, 175 mls, 15KV, or secondary.
F. 750 kcmil AL cable, 175 mls, 15KV, or secondary.
G. 750 kcmil AL cable, 175 mls, tree-retardant NS, jacketed.
H. No. 1/0 AL cable, 280 mls, 28KV.
I. No. 3/0 AL cable, 280 mls, 28KV.
J. 750 kcmil AL cable, 280 mls, 28KV.
K. 350 kcmil AL cable, 280 mls, 25KV.
L. Marker to locate cable
M. Refer to Note on Drawing, VI for Note 1, etc.
N. No. 1/0 AL solid, 280 mls, 28KV, jacketed.
O. No. 1/0 AL stranded, 280 mls, 28KV, jacketed.
P. No. 1/0 AL stranded, 280 mls, 25KV, jacketed.
Q. No. 1/0 AL stranded, 280 mls, 25KV, jacketed.
R. No. 1/0 AL stranded, 280 mls, 25KV, jacketed.
S. 350 kcmil AL cable, 260 mls tree-retardant NS, 25KV, jacketed.
T. 350 kcmil AL cable, 260 mls tree-retardant NS, 25KV, jacketed.
U. 350 kcmil AL cable, 260 mls tree-retardant NS, 25KV, jacketed.
V. 350 kcmil AL cable, 260 mls tree-retardant NS, 25KV, jacketed.
W. 750 kcmil AL cable, 260 mls tree-retardant NS, 25KV, jacketed.
X. 750 kcmil AL cable, 260 mls tree-retardant NS, 25KV, jacketed.

PROP. ELEC. CONDUCTORS ONLY

- PROP. ELEC. AND GAS LINES ONLY
PROP. GAS LINE ONLY
PROP. ELEC., GAS AND TELECOMMUNICATIONS
EXST. ELEC. CONDUCTORS ONLY
EXST. GAS LINE ONLY
FUTURE ELECTRIC TRENCH

Ex: [3R] - No. 1/0 solid AL cable for three-phase primary
[3G40] - No. 1/0 AL cable for 3-phase primary
and 350 AL cable for 1-phase secondary

CONDUCTOR CHANGE

SUBSTATION	WD NO.	METER ORDER NUMBER	METER NUMBER	READ	METER LOCATION
MILLERS POINT	1284				
CIRCUIT	CKT NO.	TLM NUMBER	# OF RODS	OHMS	Crimson Lane ECNC LED
CONCORD	03	52122412			CM NO. 100007615348
Consumer's Energy <small>A CMS Energy Company</small>		CE STAKING REQ'D	<input type="checkbox"/> Yes <input checked="" type="checkbox"/> No	ORDER TYPE	LED
		FORESTRY REQ'D	<input type="checkbox"/> Yes <input checked="" type="checkbox"/> No	ORDER NUMBER	11677220
SHEET B SHEET 1 OF 1		SCALE	NTS	DESTIN NUMBER	1070483884
				NOTIFICATION NUMBER	11677220
				MAT. TYPE	LED
				ORDER NUMBER	11677220

JOB PURPOSE:		CONSUMERS ENERGY CONTACTS	
CUST REQ UPGRADE FROM HPS TO LED FOR 3 STLT'S ON CRIMSON LN		DEPARTMENT	NAME
		COORDINATOR	TANYA GILROY
		DESIGNER	JASON MALLON
		NUMBER	6165304365
			8103348730
		OSHTEMO TWP	T 02S R 12W SEC. 24

9

REMOVE

100W HPS TRAD STILT

INSTALL

50W LED TRAD STILT
FIGURE 42-215-2

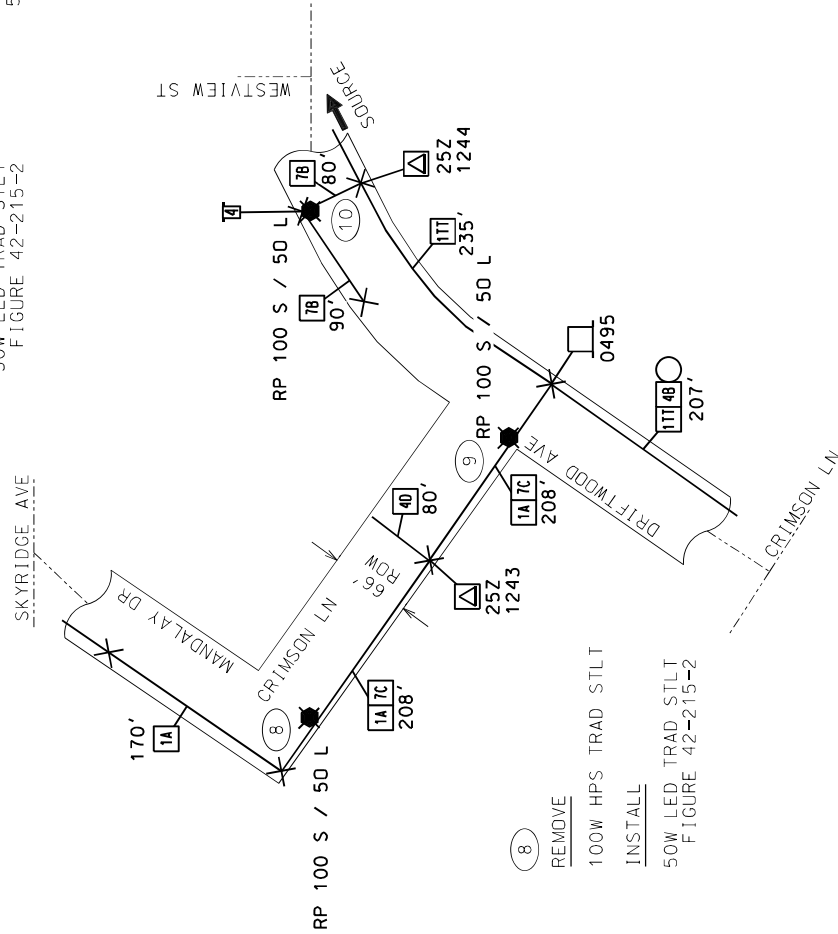
10

REMOVE

100W HPS TRAD STILT

INSTALL

50W LED TRAD STILT
FIGURE 42-215-2



8

REMOVE

100W HPS TRAD STILT

INSTALL

50W LED TRAD STILT
FIGURE 42-215-2

MISS DIG System, Inc.
1-800-482-7171





A CMS Energy Company

CEM Support Center

Consumers Energy, Lansing Service Center, Rm. 122, 530 W. Willow St., Lansing, MI 48906-4754

September 25, 2024

NOTIFICATION #:
1070483876

OSHTMO TOWNSHIP
7275 W MAIN ST
KALAMAZOO, MI 49009-8210

REFERENCE: WEST VIEW ST, KALAMAZOO

Dear Valued Customer,

Thank you for contacting Consumers Energy for your energy needs. Please note the Notification Number above and include it on any correspondence you send. Please note the Account Number, located above the Account Name on your invoice, when submitting payment.

Enclosed for approval and signature is the original Authorization for Change and Resolution covering the replacement and/or installation of streetlight(s). You are responsible for the final restoration.

The estimated cost for your energy request is as follows:

Non Refundable Agreement for Installation of Electric Facilities:

Winter Construction Costs:

\$ -

Installation Charge:

\$ 2,297.00

Additional Costs

Total Estimated Cost:

\$ 2,297.00

Less Prepayment Received:

\$ -

Total Estimated Cost Due:

\$ 2,297.00

Please sign and return the original Authorization for Change and Resolution in the enclosed self-addressed envelope or email to: POBoxCEServiceRequest@cmsenergy.com. Payment in full is required before the installation can be scheduled for construction.

Please review all attached materials carefully and direct inquiries for your request to:

Tanya Gilroy at 616-251-0574 .



A CMS Energy Company

Dear New Electric Customer:

Thank you for your request for electric service. In order to expedite your request and meet your schedule, we have developed the following list of items requiring action by you (Customer Responsibilities). These requirements must be met before we can install your service.

CUSTOMER RESPONSIBILITIES

- 1) Service Location: A copy of our design document may be included in your customer packet. If included, your service entrance equipment should be located at the spot indicated by an "X" as shown on the design document (Form 2804). Install the meter socket 3½ - 5 feet above final grade of this location.
- 2) Meter Socket: Residential metering equipment furnished free of charge, owned and maintained by Consumers Energy includes: meters and one or two position self-contained meter sockets. Contact the company representative assigned to your notification for locations to pick-up the meter socket. For metering installations that require a three or more position self-contained meter socket, the customer will be required to purchase approved meter sockets from a distributor or supplier of their choice.
- 3) Payment: An invoice may be included in your customer packet. If included, the deposit amount on the invoice must be paid prior to installation of your service. Additional charges may apply and will be billed/or a refund issued upon completion of your service installation.
- 4) Site Conditions: The site must be within three (3) inches of final grade before we can install your service. If you have requested an underground service, you will need to clear a 12-foot wide path that is free of building materials, brush, trees, shrubs, etc, along the proposed service route to avoid delays. Our Forestry Department can provide this service for you at an additional charge. For overhead service, nominal line clearing will be provided at no charge. Any extensive line clearing may require additional charges. After your service is installed, we will backfill and place excavated earth over the trench. You are responsible for the final restoration and ensuring that the grading over the trench is at the required level.
- 5) Staking: To avoid damage, you must mark (stake) your existing private underground facilities such as: well, septic systems, sprinkler system, any underground wires, buried LPG tanks, piping, or other unusual buried facilities. These stakes must be apparent when we arrive to install the service. We cannot reimburse you for damage to facilities that are not properly staked. You do not need to stake the utilities' electric, gas or communication lines.
- 6) Mobile Home or Temporary Service: If you requested service to a mobile home or temporary electric service, you will be required to set your own pole or install a pipe for underground service in accordance with Consumers Energy specifications. Contact the Consumers Energy representative assigned to your notification for additional information.
- 7) Construction Repair: If additional line work is required to reach your location due to site conditions or other unusual circumstances, extra charges may be incurred.
- 8) **ELECTRICAL INSPECTION: YOU ARE RESPONSIBLE FOR ENSURING THAT ALL ELECTRICAL PERMITS AND INSPECTIONS ARE OBTAINED BEFORE ANY SERVICE CONNECTIONS CAN BE MADE. WIRINGS MUST COMPLY WITH LOCAL AND STATE ELECTRICAL CODES. NOTE: CAUTION SHOULD BE USED WHEN WORKING INSIDE FUSE PANEL. PANEL MAY BE ENERGIZED AFTER SERVICE IS CONNECTED**
- 9) Additional Charges: Underground services installed during the months of December through April may be subject to an additional charge. Unusual site conditions may also require an additional charge. These charges will be communicated to you in advance of construction.
- 10) Joint Trenching: Discounts for installation of electric and gas service in the same trench (joint trench) are applied in calculating the gas service contribution.
- 11) Usage Rate: Customers are billed at a general service rate while the structure is under construction. If the structure is a home, then the owner of the home, upon receiving a Certificate of Occupancy, should call 1-800-477-5050 to ensure the gas and/or electric rates are changed to an appropriate rate.

Please keep these procedures in a convenient location to review as we proceed with designing your service and constructing the job. If any of the characteristics of the service request are changed and not communicated to us, you may experience delays and/or additional charges.

If you have any questions regarding these requirements please direct inquiries to:

Tanya Gilroy

at 616-251-0574

PLEASE RETURN THE CHECKED DOCUMENTS BELOW TO CONSUMERS ENERGY IN THE ENVELOPE PROVIDED

TO EXPEDITE SERVICE, RETURN VIA EMAIL TO:

POBoxCEServiceRequest@cmsenergy.com

☐

AGREEMENT FOR INSTALLATION (Please return all pages of contracts)
(Form 93, Form 94 and Form 95 - 2 Page Document Each)
(Form 861, Form 862 and Form 230 - 4 Page Document Each)

☒

PAYMENT WITH INVOICE STUB
(BOTTOM STUB IS REQUIRED FOR PROCESSING)

☐

REQUEST FOR ELEVATED CUSTOMER DELIVERY PRESSURE

☒

STANDARD LIGHTING CONTRACT (MUST BE CERTIFIED BY CLERK)
EMAIL STREETLIGHT CONTRACTS TO:
street_lighting@cmsenergy.com

☐

SIGNED CUSTOMER ATTACHMENT PROGRAM (CAP) CONTRACT
(PLEASE ENSURE TO CHECK PAYMENT OPTION ON CONTRACT)

☐

GO READY FORM (FORM 1250)
TO EXPEDITE SERVICE, RETURN VIA EMAIL TO:
POBoxCEServiceRequest@cmsenergy.com

☐

SITE READY PHOTO(S)
TO EXPEDITE SERVICE, RETURN VIA EMAIL TO:
POBoxCEServiceRequest@cmsenergy.com

☐

OTHER:

ELECTRIC SERVICE NOTIFICATION:

GAS SERVICE NOTIFICATION:

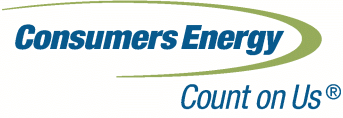
ELECTRIC OH DISTRIBUTION NOTIFICATION:

ELECTRIC UG DISTRIBUTION NOTIFICATION:

GAS MAIN NOTIFICATION:

STREETLIGHT NOTIFICATION:

1070483876



OSHTEMO TOWNSHIP
7275 W MAIN ST
KALAMAZOO MI 49009-8210

Amount Due: \$2,297.00

Please pay by: October 09, 2024

Invoice Number	9327514355
PO Number	
PO Date	
Bill Date	09/25/24

Account: 3000 2280 1462

WEST VIEW ST KALAMAZOO - STREETLIGHTING - NOTIFICATION NUMBER (s): 1070483876 -

NONENERGY INVOICE

DESCRIPTION	QUANTITY	UNIT PRICE	AMOUNT
Electric Streetlight	1.0 EA	\$2,297.00	\$2,297.00
TOTAL DUE:			\$2,297.00
See Page 2 for Payment Options.			
Consumers Energy is regulated by the Michigan Public Service Commission, Lansing, Michigan			

INVOICE QUESTIONS - Contact: Tanya Gilroy -616-251-0574 -

Fold, detach and mail this stub with your check made payable to Consumers Energy. Please write your account number on your check.



CONSUMERS ENERGY
CEM Support Ctr - Lansing RM 122
530 W Willow St
Lansing, MI 48906-4754

PREPAYMENT REQUEST

Account: 3000 2280 1462

Amount Due: \$2,297.00

Please pay by: October 09, 2024

Enclosed:

Ways to pay your nonenergy bill:



Same-day payment
ConsumersEnergy.com
Discover® MasterCard®
Visa® or eCheck



Same-day payment
866-329-9593
Discover® MasterCard®
Visa® or eCheck



By mail
Check, money order
Consumers Energy
Payment Center
P.O. Box 740309
Cincinnati, OH 45274-0309



In person
Cash, check, card
or money order
Varies by authorized payment location
Fee may apply



**AUTHORIZATION FOR CHANGE IN STANDARD LIGHTING
CONTRACT(COMPANY-OWNED) FORM 547**

Contract Number: 100000184687

Consumers Energy Company is authorized as of _____ by the Township of OSHTMO, to make changes, as listed below, in the lighting system(s) covered by the existing Standard Lighting Contract between the Company and the Township of OSHTMO, dated 2/1/2013.

Lighting Type: General Service Unmetered Lighting Rate GUL, Standard High Intensity Discharge

Except for the changes in the lighting system(s) as herein authorized, all provisions of the aforesaid Standard Lighting Contract dated 2/1/2013 shall remain in full force and effect.

Contract Number: 103035156878

Consumers Energy Company is authorized as of _____ by the Township of OSHTMO, to make changes, as listed below, in the lighting system(s) covered by the existing Standard Lighting Contract between the Company and the Township of OSHTMO, dated 10/2/2018.

Lighting Type: General Unmetered Light Emitting Diode Lighting Rate GU-LED

Except for the changes in the lighting system(s) as herein authorized, all provisions of the aforesaid Standard Lighting Contract dated 10/2/2018 shall remain in full force and effect.

Notification Number(s): 1070483876

Comments:

Township of OSHTMO

By: _____

(Signature)

(Printed)

Its: _____

(Title)

This Agreement may be executed and delivered in counterparts, including by a facsimile or an electronic transmission thereof, each of which shall be deemed an original. Any document generated by the parties with respect to this Agreement, including this Agreement, may be imaged and stored electronically and introduced as evidence in any proceeding as if original business records. Neither party will object to the admissibility of such images as evidence in any proceeding on account of having been stored electronically.

RESOLUTION

RESOLVED, that it is hereby deemed advisable to authorize Consumers Energy Company to make changes in the lighting service as provided in the Standard Lighting Contract between the Company and the Township of OSHTMO, dated 2/1/2013, in accordance with the Authorization for Change in Standard Lighting Contract dated _____,

RESOLVED, that it is hereby deemed advisable to authorize Consumers Energy Company to make changes in the lighting service as provided in the Standard Lighting Contract between the Company and the Township of OSHTMO, dated 10/2/2018, in accordance with the Authorization for Change in Standard Lighting Contract dated _____,

heretofore submitted to and considered by this ☐ commission ☐ council ☐ board; and

RESOLVED, further, that the _____ Clerk be and are authorized to execute such authorization for change on the behalf of the Township.

STATE OF MICHIGAN
COUNTY OF KALAMAZOO

I, _____, clerk of the Township of OSHTMO do hereby certify that the foregoing resolution was duly adopted by the

☐ commission ☐ council ☐ board of said municipality, at the meeting held on _____.

Dated:

Municipal Customer Type: Township

GENERAL SERVICE UNMETERED LIGHTING RATE GUL, STANDARD HIGH INTENSITY DISCHARGE

- (2) 100 watt HPS Post Top Traditional to Remove at location Westview St LED CONVERSION;

GENERAL UNMETERED LIGHT EMITTING DIODE LIGHTING RATE GU-LED

- (2) 50 watt LED White Post Top Traditional to Install at location Westview St LED CONVERSION;

GENERAL NOTES:

- NO OUTAGE REQUIRED
- SWITCH OPEN AT TLM 1141
- PRIMARY 4.8/8.32 KV WYE GROUNDED

UNDERGROUND LEGEND

1. Single-phase primary
2. Open wye primary
3. Three-phase primary
4. Single-phase secondary
5. Combination light and power secondary
6. Three-phase power secondary
7. Single-phase service
8. Combination lighting and power service
9. Three-phase power service
10. Streetlighting conductor (2/C-10 CU)
11. Streetlighting conductor (2/C-8 AL)
12. Covered neutral conductor for ducts
13. Streetlighting conductor (3/C-1/0 AL)

CONDUIT

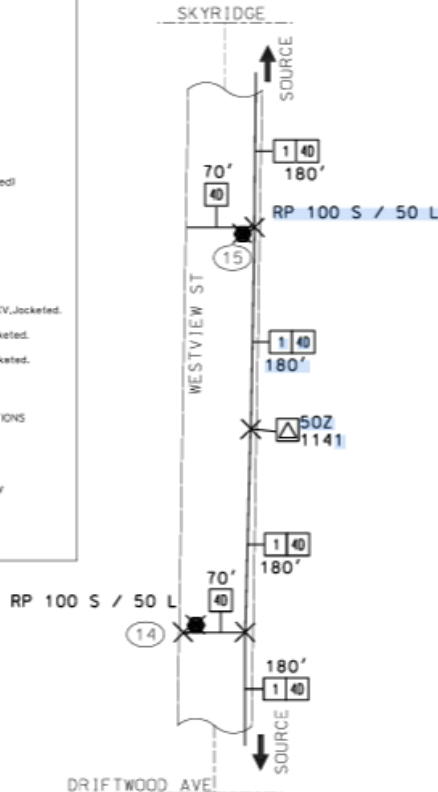
- P2 2" Plastic P3 3" Plastic P4 4" Plastic P6 6" Plastic
 S2 2" Steel S3 3" Steel S4 4" Steel S5 5" Steel S6 6" Steel
 BR3 Bore 3" Hole BR4 Bore 4" Hole BR6 Bore 6" Hole

CABLE MATERIAL AND SIZE

- A. No 2 AL cable, 175 mls, 15KV, or secondary.
 B. No 1/0 AL cable, 175 mls, 15KV, or secondary.
 C. No 3/0 AL cable, 175 mls, 15KV, or secondary.
 D. 350 kcmil AL cable, 175 mls, 15KV, or secondary.
 E. 500 kcmil copper cable, 175 mls, 15KV, or secondary.
 F. 750 kcmil AL cable, 175 mls, 15KV, or secondary.
 FF. 1000 kcmil AL cable (175 mls tree-retardant NS, jacketed)
 G. No 1/0 stranded AL cable, 260 mls, 28KV.
 H. No 3/0 stranded AL cable, 260 mls, 28KV.
 I. 750 kcmil AL cable, 260 mls, 28KV.
 J. Cable joint.
 K. 350 kcmil cable, 260 mls, 25KV.
 M. Marker to locate cable
 N. Refer to Note on Drawing, M for Note 1, etc.
 R. No 1/0 AL, solid, 280 mls, 28KV.
 T. No 1/0 AL stranded, 280 mls, 28KV, jacketed
 TT. No 1/0 AL stranded cable, 260 mls tree-retardant NS, 25KV, jacketed.
 V. 350 kcmil AL stranded, 260 mls, 25KV, jacketed.
 VT. 350 kcmil AL cable, 260 mls tree-retardant NS, 25KV, jacketed.
 W. 750 kcmil AL stranded, 260 mls, 28KV, jacketed.
 WT. 750 kcmil AL cable, 260 mls tree-retardant NS, 25KV, jacketed.
- PROP. ELEC. CONDUCTORS ONLY
 PROP. ELEC. AND GAS LINES ONLY
 PROP. GAS LINE ONLY
 PROP. ELEC., GAS AND TELECOMMUNICATIONS
 EXIST. ELEC. CONDUCTORS ONLY
 EXIST. GAS LINE ONLY
 FUTURE ELECTRIC TRENCH

- EX: BR - No. 1/0 solid AL cable for three-phase primary
 SC40 - No. 1/0 AL cable for 3-phase primary and 350 AL cable for 1-phase secondary
 X - CONDUCTOR CHANGE

UPSTREAM DEVICE: 0426-125A
LOCATION: SKYRIDGE AVE & S DRAKE RD



(15)

REMOVE

100W HPS STLT

INSTALL

50W LED STLT
FIGURE 42-215-2

(14)

REMOVE

100W HPS STLT

INSTALL

50W LED STLT
FIGURE 42-215-2

UPSTREAM DEVICE: 0428-125A
LOCATION: DRIFTWOOD AVE & S DRAKE RD

MISS DIG System, Inc.

1-800-482-7171



SUBSTATION		WD NO.	METER LOCATION		METER NUMBER		METER ORDER NUMBER		CONSUMERS ENERGY CONTACTS		
MILLERS POINT		1284							DEPARTMENT TANYA CILROY DESIGNER JASON MALLON 6165304365 8103348730		
CIRCUIT		CKT NO.	TLM NUMBER	# OF ROADS	OHMS	CM NO. 100007615452			JOB PURPOSE:		
CONCORD		03	52122411			ORDER TYPE	MAT. TYPE	NOTIFICATION NUMBER	DESIGN NUMBER	ORDER NUMBER	CUST REQ UPGRADE FROM HPS TO LED FOR 2 LIGHTS ON WESTVIEW ST
						ECNC	LED	1070483876	11677183		UPSTREAM SECTIONALIZING DEVICE:
											TRANSFORMER
											LOCATION:
											SEE PRINT
SHEET B		SHEET 1 OF 1	SCALE NTS		KALAMAZOO CO		OSHTEMO TWP		T 02S R 12W SEC. 24		

GENERAL NOTES:

-NO OUTAGE REQUIRED

-SWITCH OPEN AT TLM 1141

-PRIMARY 4.8/8.32 KV WYE GROUNDED



UNDERGROUND LEGEND

1. Single-phase primary

2. Open wye primary

3. Three-phase primary

4. Single-phase secondary

5. Combination light and power secondary

6. Three-phase power secondary

7. Single-phase service

8. Combination lighting and power service

9. Three-phase power service

10. Streetlighting conductor (2/C-*10 CU)

11. Streetlighting conductor (2/C-*8 AL)

12. Covered neutral conductor for ducts

13. Streetlighting conductor (3/C-*1/0 AL)
- CONDUIT

P2

2"Plastic

P3

3"Plastic

P4

4"Plastic

P6

6"Plastic

S2

2"Steel

S3

3"Steel

S4

4"Steel

S5

5"Steel

S6

6"Steel

BR3

Bore3"Hole

BR4

Bore4"Hole

BR6

Bore6"Hole

CABLE MATERIAL AND SIZE

A. No 2 AL cable,175 mils,15KV, or secondary.

B. No 1/0 AL cable,175 mils,15KV, or secondary.

C. No 3/0 AL cable,175 mils,15KV, or secondary.

D. 350 kcmil AL cable,175 mils,15KV, or secondary.

E. 500 kcmil copper cable,175 mils, 15KV, or secondary.

F. 750 kcmil AL cable,175 mils, 15KV, or secondary.

FF. 1000 kcmil AL cable (175 mils tree-retardant INS, Jacketed)

G. No 1/0 stranded AL cable, 280 mils, 28KV.

H. No 3/0 stranded AL cable, 280 mils, 28KV.

I. 750 kcmil AL cable, 280 mils, 28KV.

J. Cable joint.

K. 350 kcmil AL cable, 260 mils, 25KV.

M. Marker to locate cable

N. Refer to Note on Drawing, N1 for Note 1, etc.

R. No 1/0 AL, solid, 280 mils, 28KV.

T. No 1/0 AL stranded, 280 mils, 28KV, jacketed

TT. No 1/0 AL stranded cable, 260 mils tree-retardant INS,25KV,Jacketed.

V. 350 kcmil AL stranded, 260 mils, 25KV, jacketed.

VT. 350 kcmil AL cable, 260 mils tree-retardant INS, 25KV, Jacketed.

W. 750 kcmil AL stranded, 280 mils, 28KV, jacketed.

WT. 750 kcmil AL cable, 260 mils tree-retardant INS, 25KV, Jacketed.

PROP. ELEC. CONDUCTORS ONLY

PROP. ELEC. AND GAS LINES ONLY

PROP. GAS LINE ONLY

PROP. ELEC., GAS AND TELECOMMUNICATIONS

EXIST. ELEC. CONDUCTORS ONLY

EXIST. GAS LINE ONLY

FUTURE ELECTRIC TRENCH

EX:

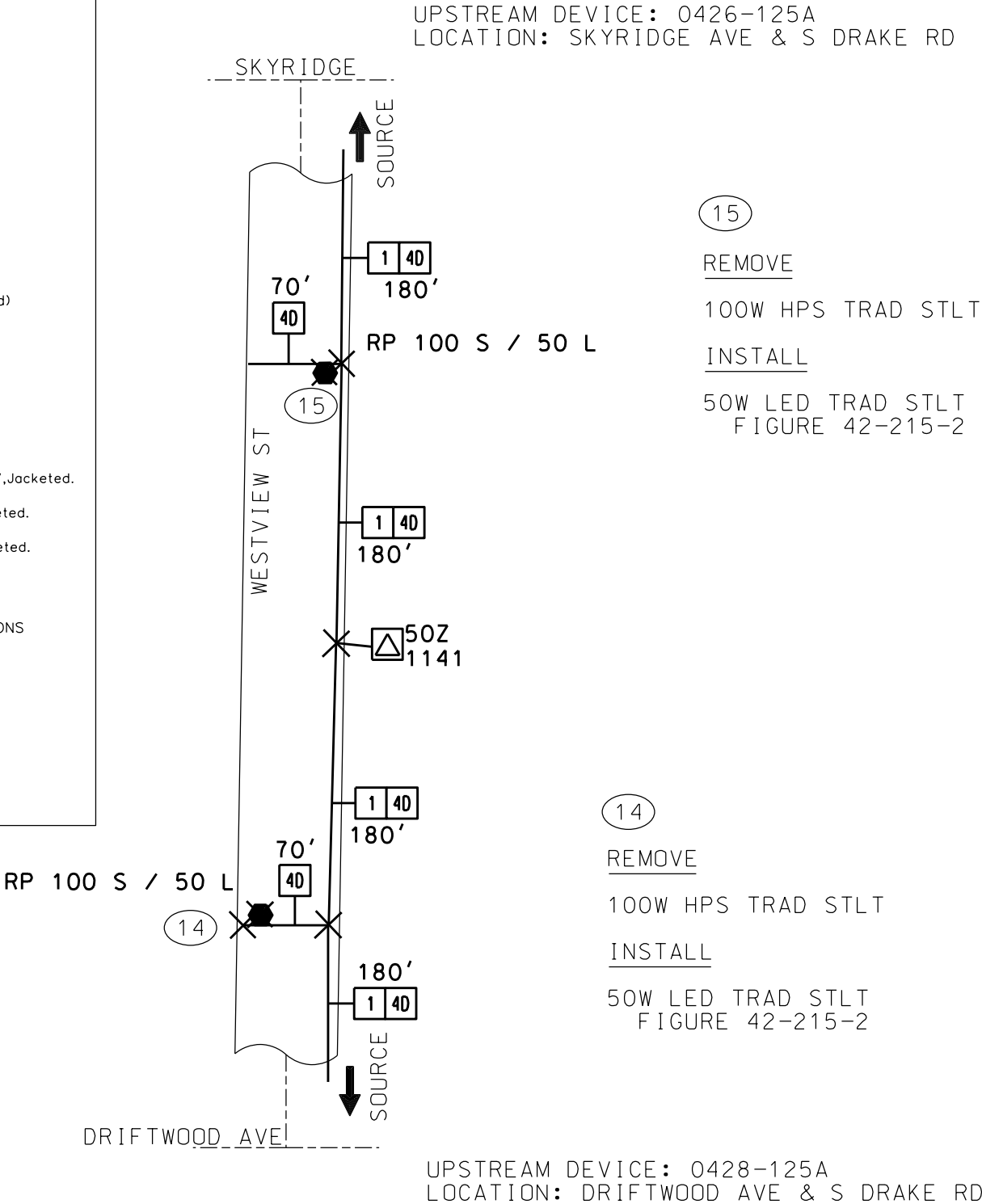
3R

No. 1/0 solid AL cable for three-phase primary

3G4D

No. 1/0 AL cable for 3-phase primary and 350 AL cable for 1-phase secondary


CONDUCTOR CHANGE



MISS DIG System, Inc.

1-800-482-7171

811

		METER NUMBER			METER ORDER NUMBER			CONSUMERS ENERGY CONTACTS			
					READ			DEPARTMENT	NAME	NUMBER	
								COORDINATOR DESIGNER	TANYA GILROY JASON MALLON	6165304365 8103348730	
SUBSTATION	WD NO.	METER LOCATION									
MILLERS POINT	1284				Westview St ECNC LED						
CIRCUIT	CKT NO.	TLM NUMBER	# OF RODS	OHMS	CM NO.100007615452					JOB PURPOSE:	
CONCORD	03	52122411			ORDER TYPE	MAT. TYPE	NOTIFICATION NUMBER	DESIGN NUMBER	ORDER NUMBER	CUST REQ UPGRADE FROM HPS TO LED FOR 2 LIGHTS ON WESTVIEW ST	
<div> <i>A CMS Energy Company</i> ELECTRIC</div>		CE STAKING REQ'D <input type="checkbox"/> Yes <input checked="" type="checkbox"/> No			ECNC	LED	1070483876	11677183		UPSTREAM SECTIONALIZING DEVICE:	
		FORESTRY REQ'D <input type="checkbox"/> Yes <input checked="" type="checkbox"/> No								TRANSFORMER	
										LOCATION: SEE PRINT	
SHEET B	SHEET 1 OF 1	SCALE	NTS	KALAMAZOO CO				OSHTMO TWP		T 02S R 12W SEC. 24	

OSHTEMO CHARTER TOWNSHIP
KALAMAZOO COUNTY, MICHIGAN

**RESOLUTION AUTHORIZING CONSUMERS ENERGY COMPANY TO MAKE
CHANGES IN THE LIGHTING SERVICE AS PROVIDED IN THE STANDARD LIGHT
CONTRACT DATED FEBRUARY 1, 2013 & OCTOBER 2, 2018**

OCTOBER 22, 2024

WHEREAS, that it is hereby deemed advisable to authorize Consumers Energy Company to make changes in the lighting service as provided in the Standard Lighting Contract between the Company and the Township of Oshtemo, dated February 1, 2013, in accordance with the Authorization for Change in Standard Lighting Contract dated October 22, 2024.

WHEREAS, that it is hereby deemed advisable to authorize Consumers Energy Company to make changes in the lighting service as provided in the Standard Lighting Contract between the Company and the Township of Oshtemo, dated October 2, 2018, in accordance with the Authorization for Change in Standard Lighting Contract dated October 22, 2024,

NOW THEREFORE BE IT RESOLVED, the Oshtemo Charter Township Clerk, Dusty Farmer, is authorized to execute such authorization for change on behalf of the Township;

A motion was made by_____, and seconded by_____, to adopt the foregoing Resolution.

Upon roll call vote the following voted "Aye":

The following voted "Nay":

The following were Absent:

The following Abstained:

The Moderator declared the motion carried and the Resolution duly adopted.

Dusty Farmer, Clerk
Oshtemo Charter Township

CERTIFICATE

STATE OF MICHIGAN)
) ss.
COUNTY OF KALAMAZOO)

I, Dusty Farmer, the duly appointed and acting Clerk of the Township of Oshtemo, certify that the foregoing constitutes a true and complete copy of a Resolution adopted at a regular meeting of the Oshtemo Charter Township Board held on October 22, 2024, which meeting was preceded by required notices under the Michigan Open Meetings Act, being 1976 PA 267; that a quorum of the Board was present and voted in favor of said Resolution; and that minutes of said meeting were kept and will be or have been made available as required by said Open Meetings Act.

IN WITNESS WHEREOF, I have hereto affixed my official signature on this ____ day of October, 2024.

Dusty Farmer, Clerk
Oshtemo Charter Township