



Sanitary Sewer Expansion Project

PHASE 2 CONTRACT D – WESTPORT NORTH

Team Introduction



Anna Horner, Public Works Director
Zach Pearson, Public Works Project Manager

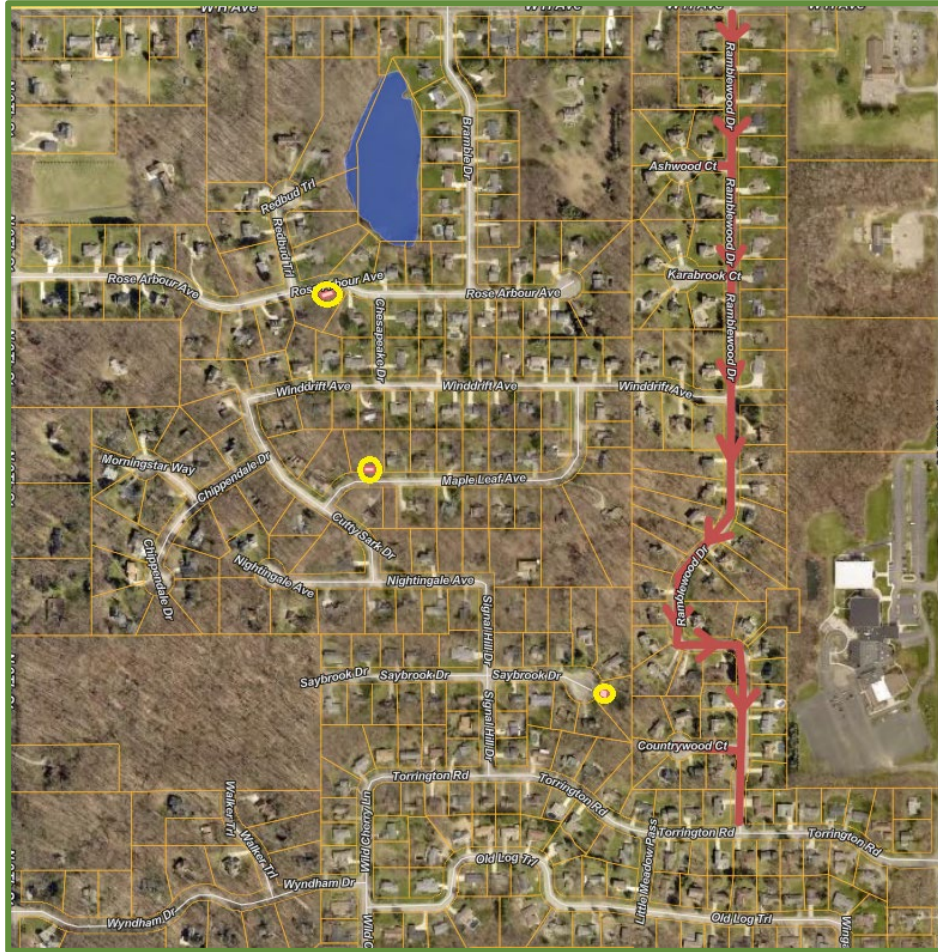


Dave Laarman, Contractor Superintendent
Cody Meyer, Contractor Superintendent



Danell Diakow, Project Engineer
Aaron Bearss, Project Field Representative

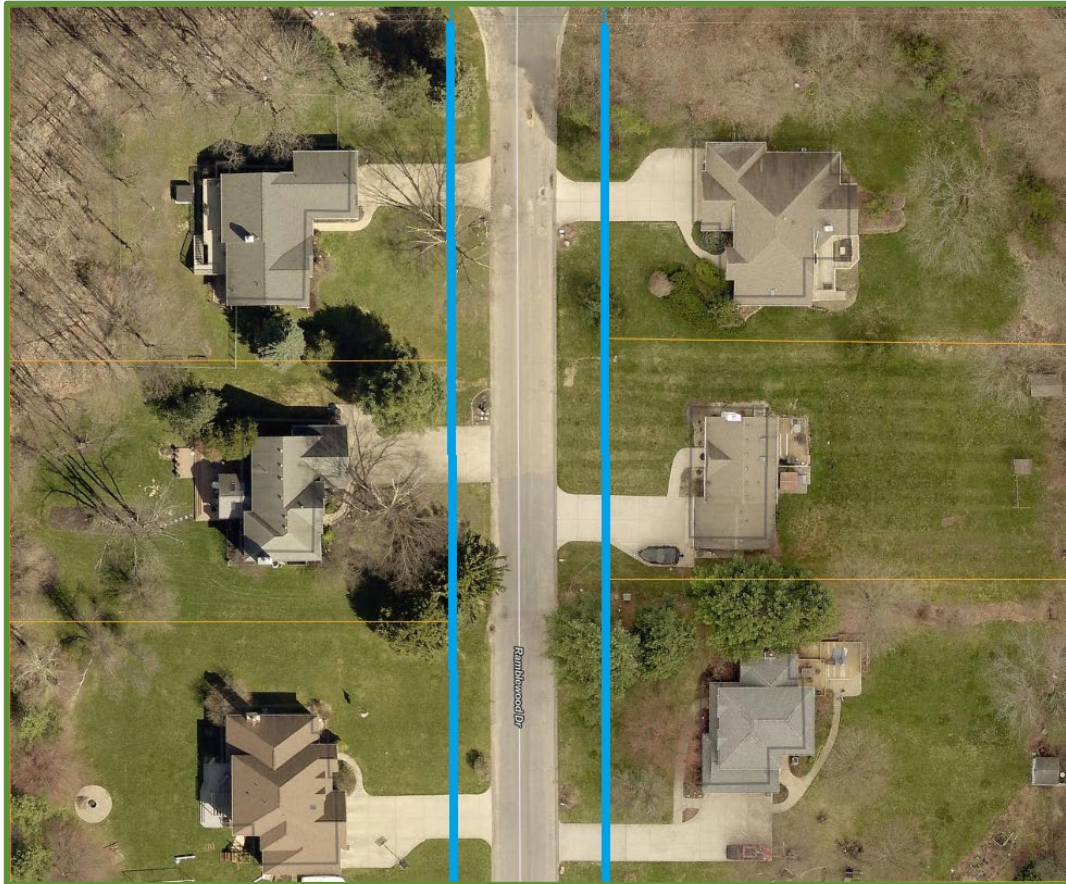
Construction Sequence



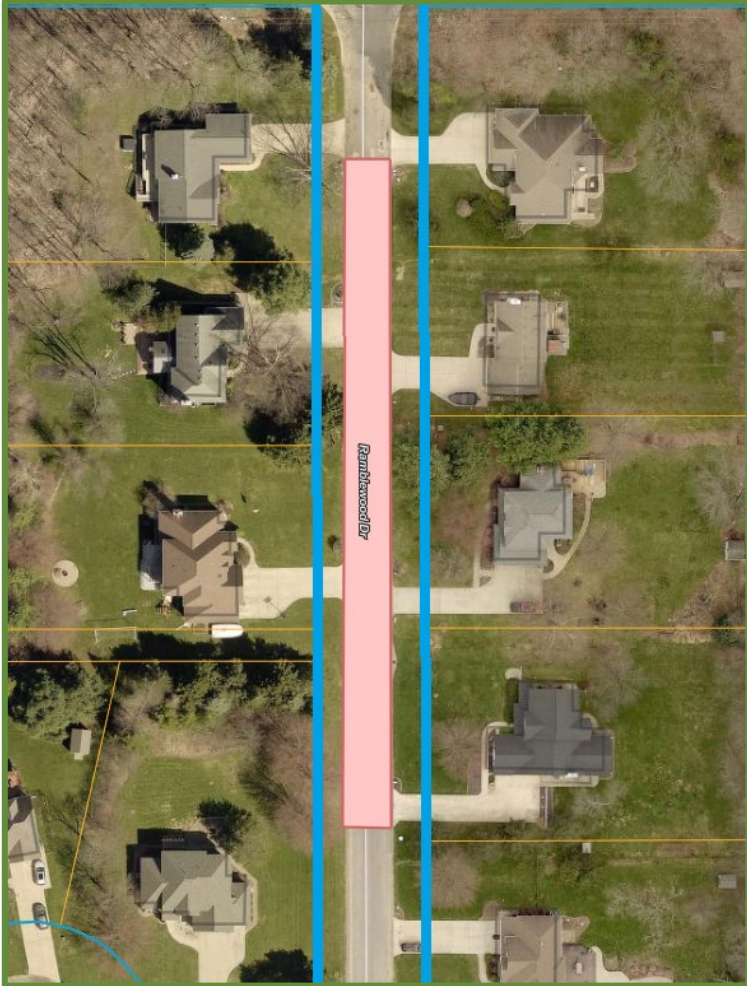
- **Work will begin at the Ramblewood Drive and H Avenue intersection.**
- **Intermittent lift station work, beginning on Rose Arbour Avenue.**
- **Subsequent streets will be outlined as construction progresses.**
- **Working inward from outside perimeter of the neighborhood.**

Construction Activity

Construction activities will be within the right-of-way (blue lines).



Construction Activity



- No more than 400 ft will be inaccessible at a time (red box).
- Fire and EMS will adjust their plans daily based on construction progress.



Construction Activity

Mailboxes and landscaping may be affected by construction activities, but the contractor will make every effort to minimize these impacts.



Construction Operations



- **Mill pavement and miscellaneous removals**
- **Sanitary sewer installation**
- **Stormwater improvements and concrete curb**
- **Road base with gravel and HMA leveling**

Construction Operations

Driveway access will be impacted during construction.



Sanitary and Storm Installation



Curb and Gutter Replacement

Road Building

Gravel base will serve as a temporary drivable surface.



Expect minor delays after new asphalt is placed and it cools.



Frequently Asked Questions #1



Mailboxes

Mail delivery is at the discretion of the mail carrier during construction.

Residents may opt for a temporary mail hold during construction, with mail picked up at the Post Office.



Waste Service

Waste services will operate unless access is restricted.

When your regular service cannot reach your property, the contractor will empty bins.



Bus Stops

Township Staff are working with Kalamazoo Public Schools on bus stop coordination.

Parents can expect updates from KPS regarding any changes.



MissDIG Flags

Every project with earth movement is required to have utilities marked by MissDIG.

To avoid delays for re-flagging, please leave flags in place until the contractor completes their work.



Irrigation

The Road Commission of Kalamazoo County does not permit irrigation systems within the public right-of-way.

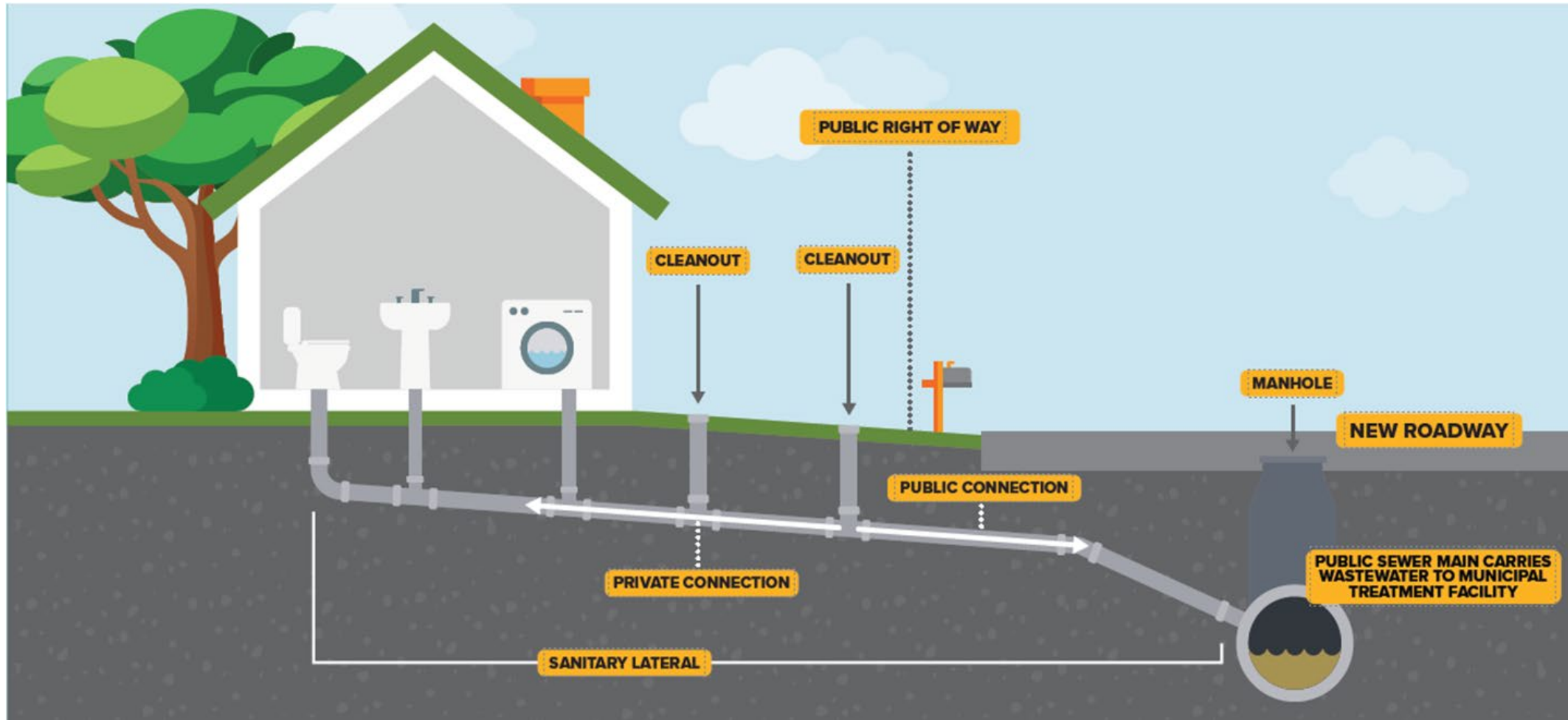
Systems may be removed as needed for road, sidewalk, or utility work. To avoid damage, please communicate with us before construction begins.

Construction Zone Safety

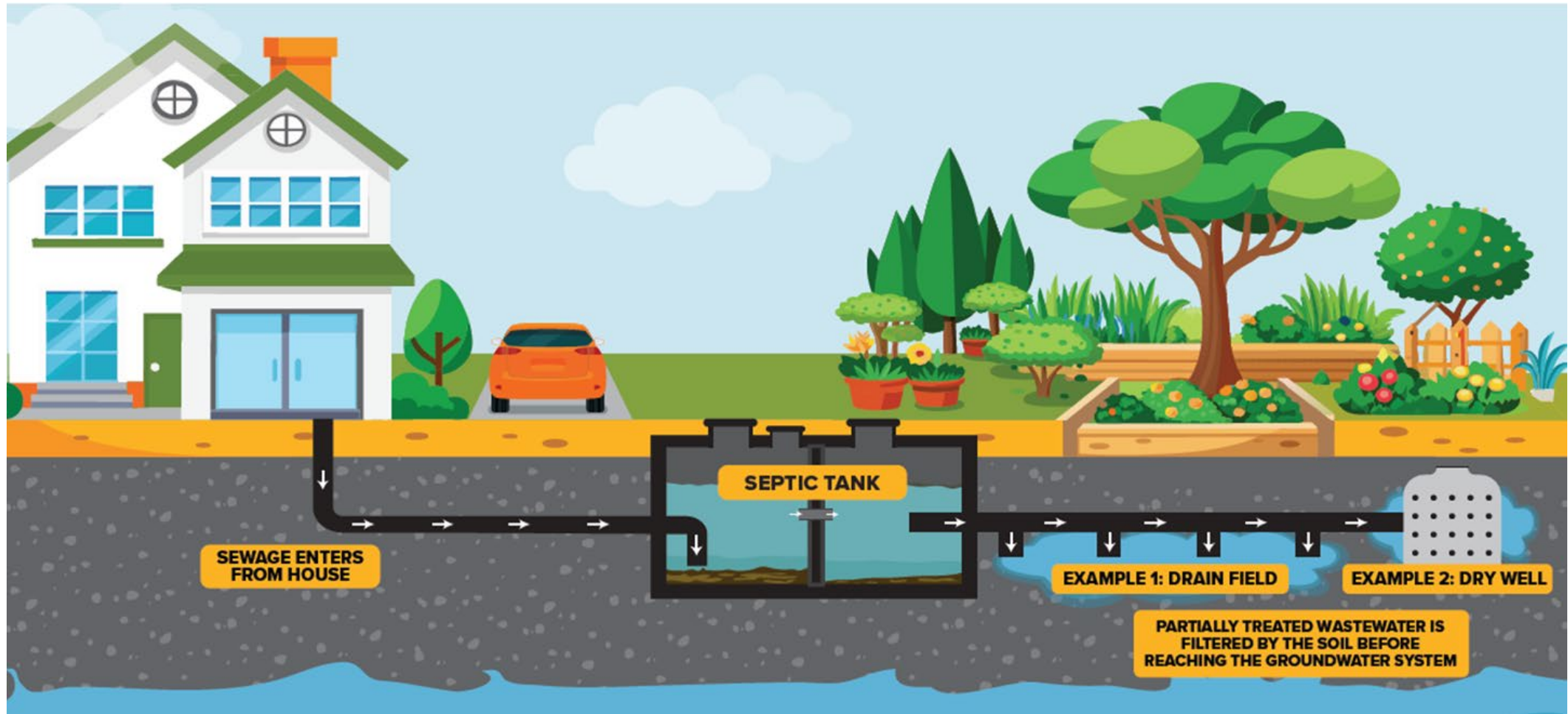


- **Resident and construction worker safety is a priority!**
- **Please respect construction barriers and follow posted signage at all times.**
- **Contractor will provide a designated safe route for foot traffic through the construction zone if necessary.**

Sanitary Sewer Connection



Septic System Abandonment



Frequently Asked Questions #2



When to Connect

A legal notice will be sent when the system is ready for connections.

From the date on that notice, properties have 24 months to connect.



Cost to Connect

\$7,500 per single family home for public connection.

Can be financed up for up to 40 years at 3.375% interest, no penalty for early pay off, assessment will appear on winter tax bill.

Private side connection costs vary based on site conditions.



Private Side Contractors

The Township maintains a list of contractors who frequently pull permits and are familiar with the area.

If you are unsure where to connect, it may be helpful to engage a contractor early for assistance.



Contact

Oshtemo Public Works
Office hours: 8 a.m. to 5 p.m. Monday through Thursday
publicworks@oshtemo.org
Zach Pearson at 269-216-5244

Text Alerts and Website Updates



- Residents are encouraged to sign up for text message alerts during construction.
- Construction progress and activities will be updated on the Township website every Friday, plus additional updates as needed.



THANK YOU!

Please reach out with any questions.

269-216-5244

PUBLICWORKS@OSHTEMO.ORG